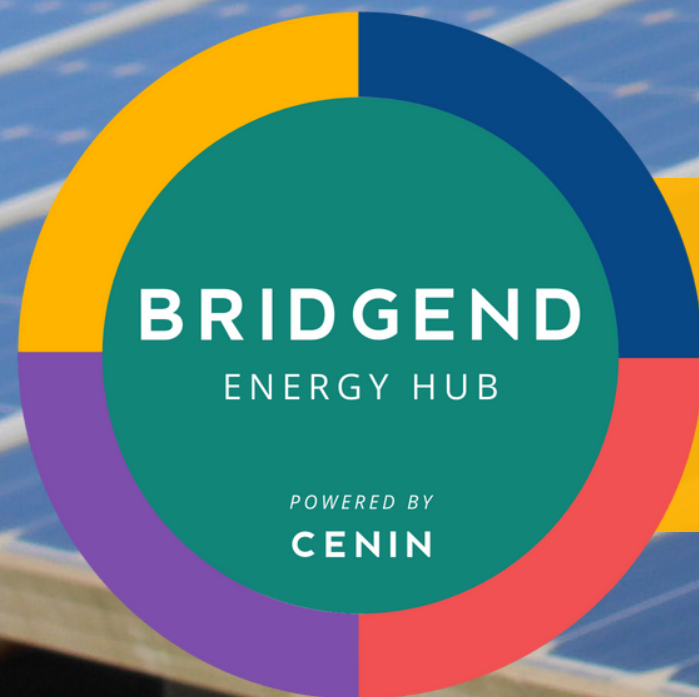


# CENIN



Welcome to Ty'n y Waun Solar

# TY'N Y WAUN SOLAR

POWERING BRIDGEND TOWARDS NET ZERO

It is my great pleasure to introduce our plans for Ty'n Y Waun Solar, a transformative renewable energy project that is a key part of our wider Bridgend Energy Hub. As we come to terms with the immense challenges climate change presents, we truly believe that schemes such as this will play a vital role in helping the region achieve its net-zero aim.

As a local developer, we are committed to ensuring the communities in which we work benefit from our schemes and we are delighted to already be providing support to a number of organisations and individuals.

We are also committed to consulting and engaging with communities regarding our plans, so should you have any questions about this application, don't hesitate to get in touch with a member of the team.

With very best wishes,  
Martyn Popham  
Director & Project Lead

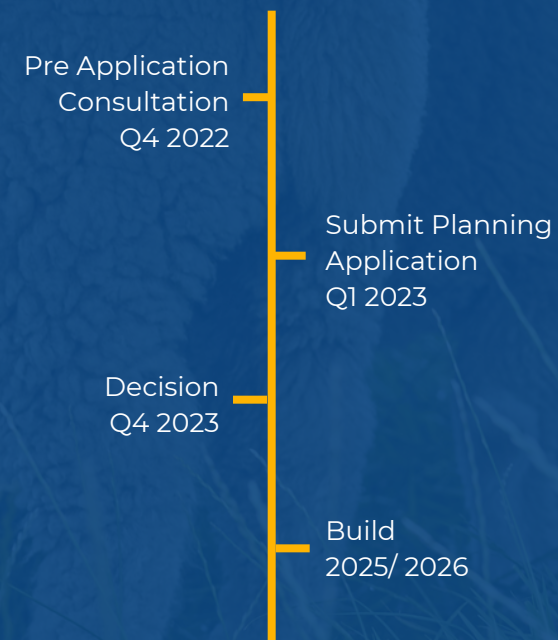
## MEET ERIC AVRILL, WHO CURRENTLY FARMS THE LANDS ON OUR TY'N Y WAUN SITE...

*I have been a livestock farmer in Heol y Cyw for over 50 years and saw the impact of open-cast mining on the area. I now farm some of the restored ground after this mining, land that has been very difficult to farm, needing lots of inputs and making farming the ground hardly financially viable.*

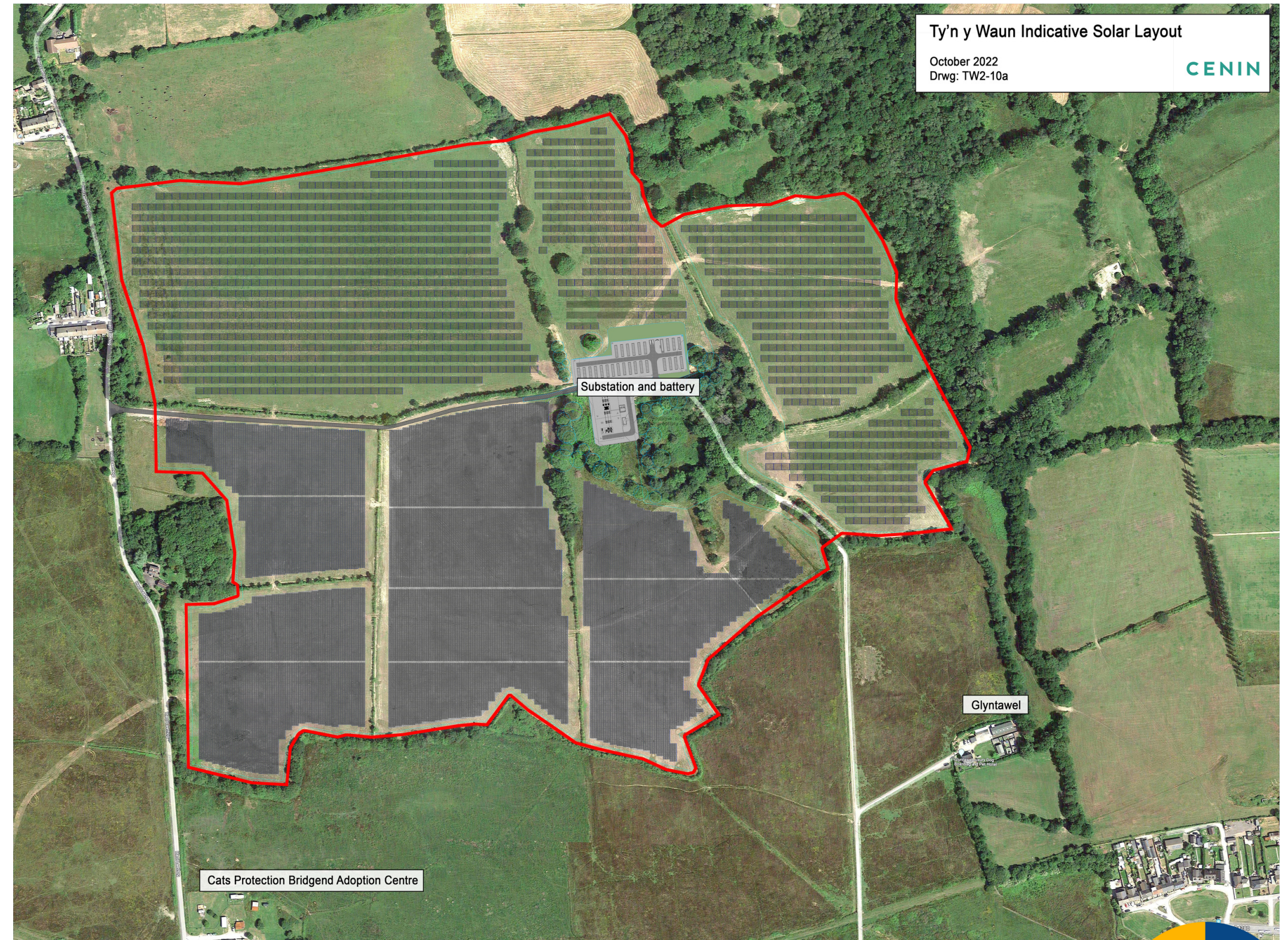
*I am happy that CENIN, a local company, is planning to invest in this area and we will continue to stock the land with sheep that will graze under the solar panels and get shelter from them. This will reduce my costs, giving us better pasture for our sheep to graze and more fencing and better woodland management which also helps the environment.*

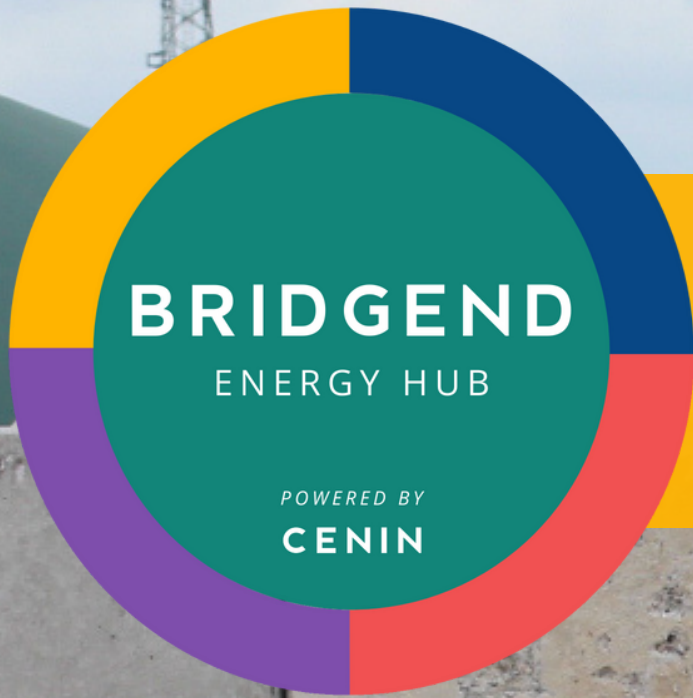
*Using the land to produce energy and allowing us to continue farming the land makes sense to me.*

## PLANNING TIMELINE



# SITE MAP





# Our Commitment to Communities



CENIN

# ENVIRONMENTAL ENHANCEMENT PLAN

## Area A – replanted quick thorn hedges

Replanted hedgerows (after opencast mining) not maintained or fenced, unable to establish properly leaving gaps and no meaningful habitat. Hedgerows plan:

- interplant with more native hedgerow species,
- fence off to protect the hedge from over grazing by sheep,
- over time, create much denser hedge to establish wildlife corridors.

## Area B – additional planting

Additional tree planting to create large buffer from row of houses situated to west. Terrace houses' main views face south, but during discussions with residents was noted old gateway gives some easterly view from gardens. New planting will screen.

## Area C – mature hedgerows

The site benefits from significant mature hedgerows of mixed species including hardwoods (Oaks and Ash). Unfortunately, the Ash trees are showing signs of Ash-die-back so will need to be selectively felled. The Oak trees will be managed to ensure they prosper and mature during the lifetime of the project. All other species in hedges will be managed to best environmental stewardship standards.

## Area D - southern area (location for east/west panels)

Relatively flat area, previously open cast mined, land has been restored. Unfortunately, restoration management had lapsed a number of years ago, soils have become waterlogged resulting in rotting organic matter in soils creating increased carbon emissions. Care plan:

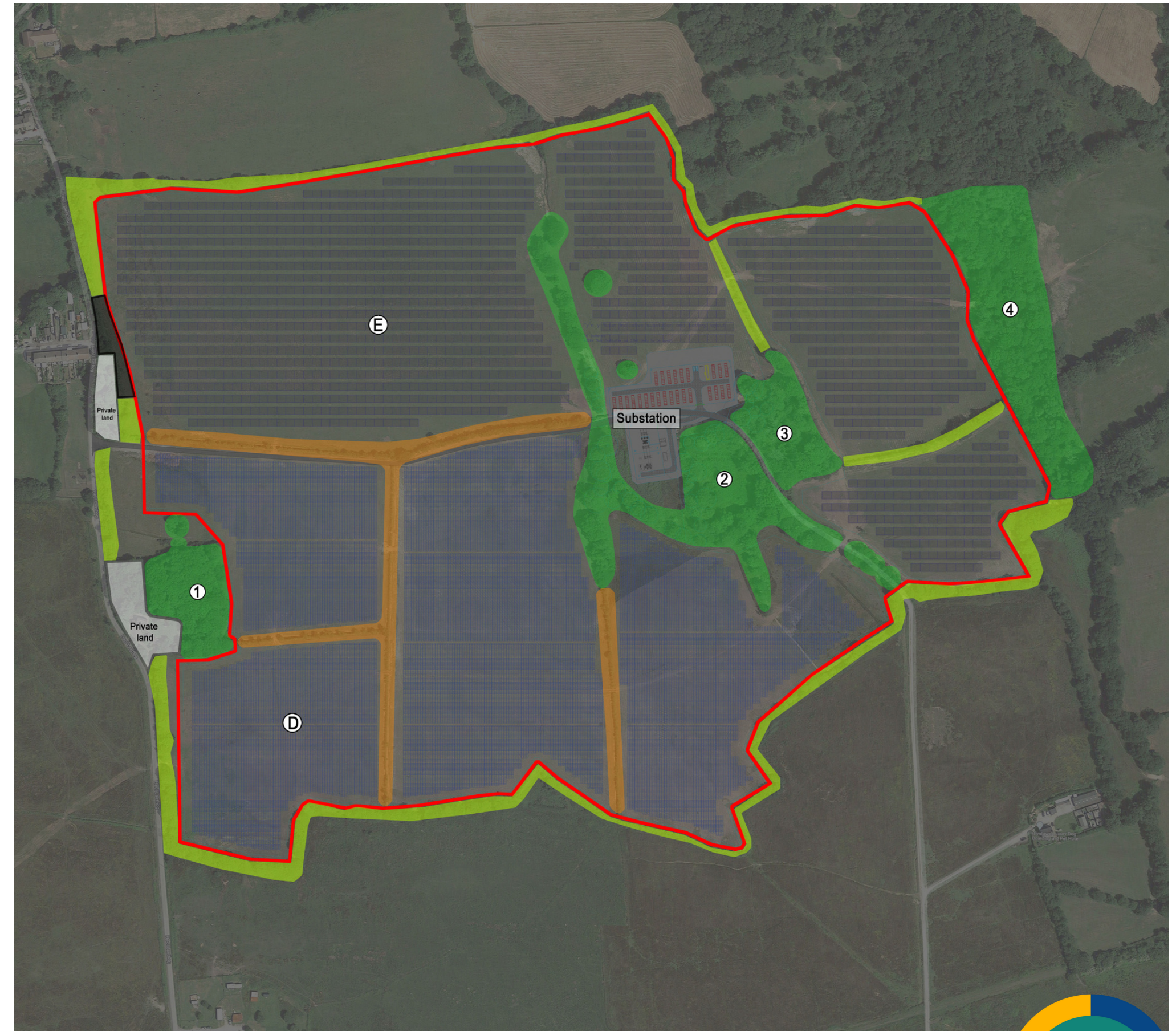
- manage soils using best regenerative agricultural techniques
- ensure swards with high ecological value are established so sheep can graze under panels and soil health is restored so it can recapture CO2.

## Area E - south facing arrays

Area of more established permanent pasture will be enhanced on a 3-year rolling programme interplanted (between panels) with nectar rich grassland mix to enhance biodiversity whilst grazed by sheep in rotation.

## Areas 1, 2, 3 and 4 of wooded areas

These 4 areas of woodland will be put into an environmental stewardship plan. Although 2 are outside submitted planning boundary, funds will be allocated for the life of the scheme to support a qualified forester to manage these areas after agreeing the initial 10-year management plan with NRW. Funding an on-going management programme for these 4 areas will significantly enhance the natural environment for the lifetime of the project.



# KEY CONSIDERATIONS

## AGRICULTURAL LAND CLASSIFICATION/SOILS

- The site comprises predominantly improved and neutral semi improved grassland, within agricultural land class 3b or below. It is therefore not classified as best and most versatile.
- Given the context of historic opencast mining activity at the site, appropriate construction techniques will be implemented to reduce above and below ground works and to minimise any compaction of soil mitigating any potential impact on the soils structure and ability to infiltrate water.
- The proposed development is temporary in nature and fully reversible and following decommissioning would ensure that the future quality of the agricultural land is maintained with no likely significant lasting adverse effects on the quality of the soil.

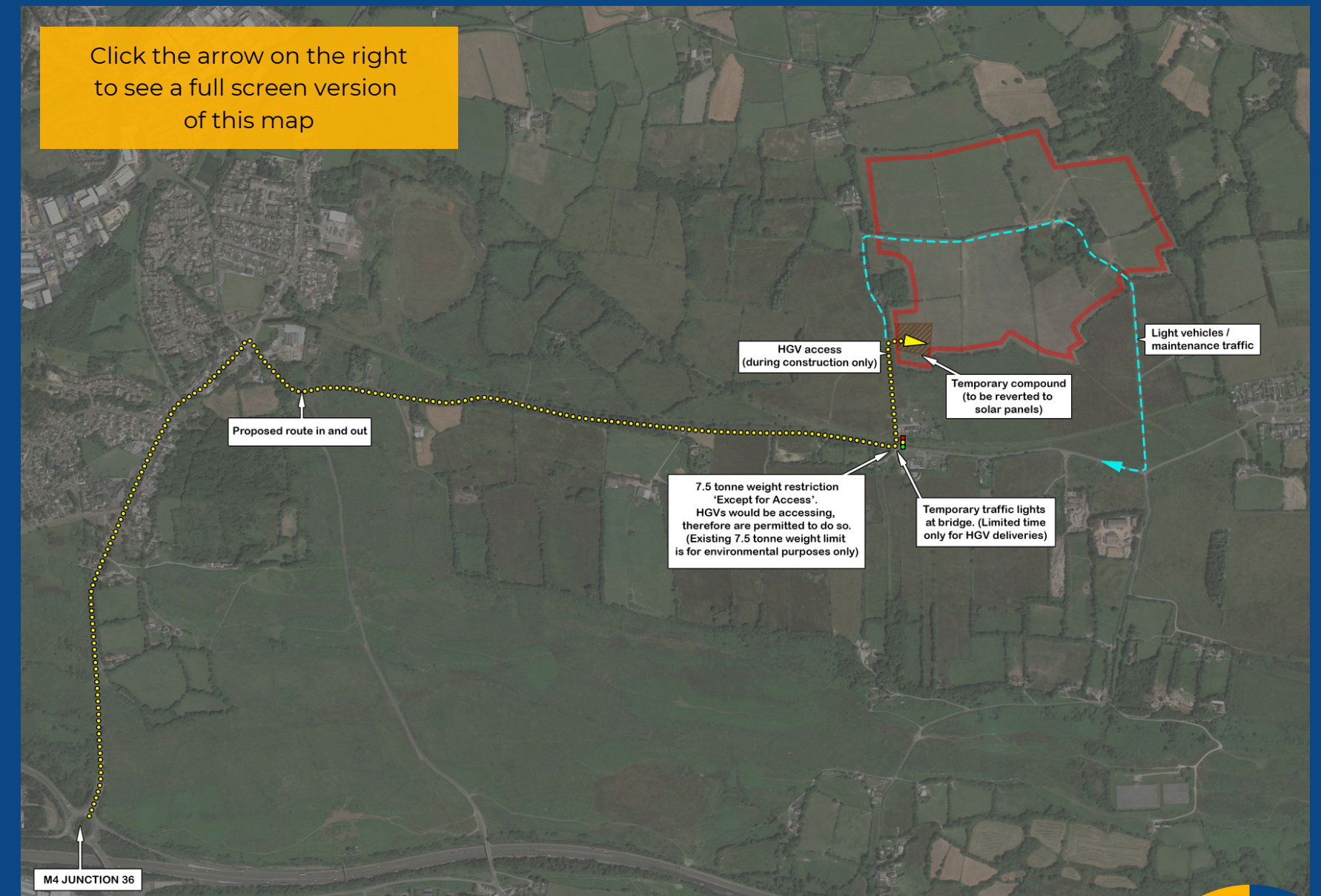
## LANDSCAPE AND VISUAL IMPACT

- Analysis of the Zone of Theoretical Visibility and site work to assess the potential visibility of the Proposed Development show that it would be visually relatively well contained. Higher visibility would be limited to local areas within 1 to 2 km. The character of the site, sloping to the north, means that there would be limited places where the proposed development as a whole would be discernible in any single view.
- The most noticeable views would be available on higher ground to the south and locally to the north along Cefn Carfan Road. From most of the surrounding landscape where the proposed development would be partly visible, it would not dominate views as the extent would be broken up by hedges, trees, small woodland and topographical variation. Further screening would be provided by mitigation implemented as part of the scheme.
- Although some parts of the proposed development would be visible from the Special Landscape Area (SLA) to the north, this would be from a very small part of it, with no potential intervisibility from the majority of the SLA. There would be limited intervisibility from the local public right of way (PRoW) network. There would be some open views to parts of the proposed development from a PRoW to the south as it traverses east to west, perpendicular to the direction of travel.
- Views from local roads would be similarly limited, with generally open or partially screened views available to parts of the proposed development from Cefn Carfan Road to the north, Heol Laethog to the west and the B4280 Pant Hirwaun to the south.

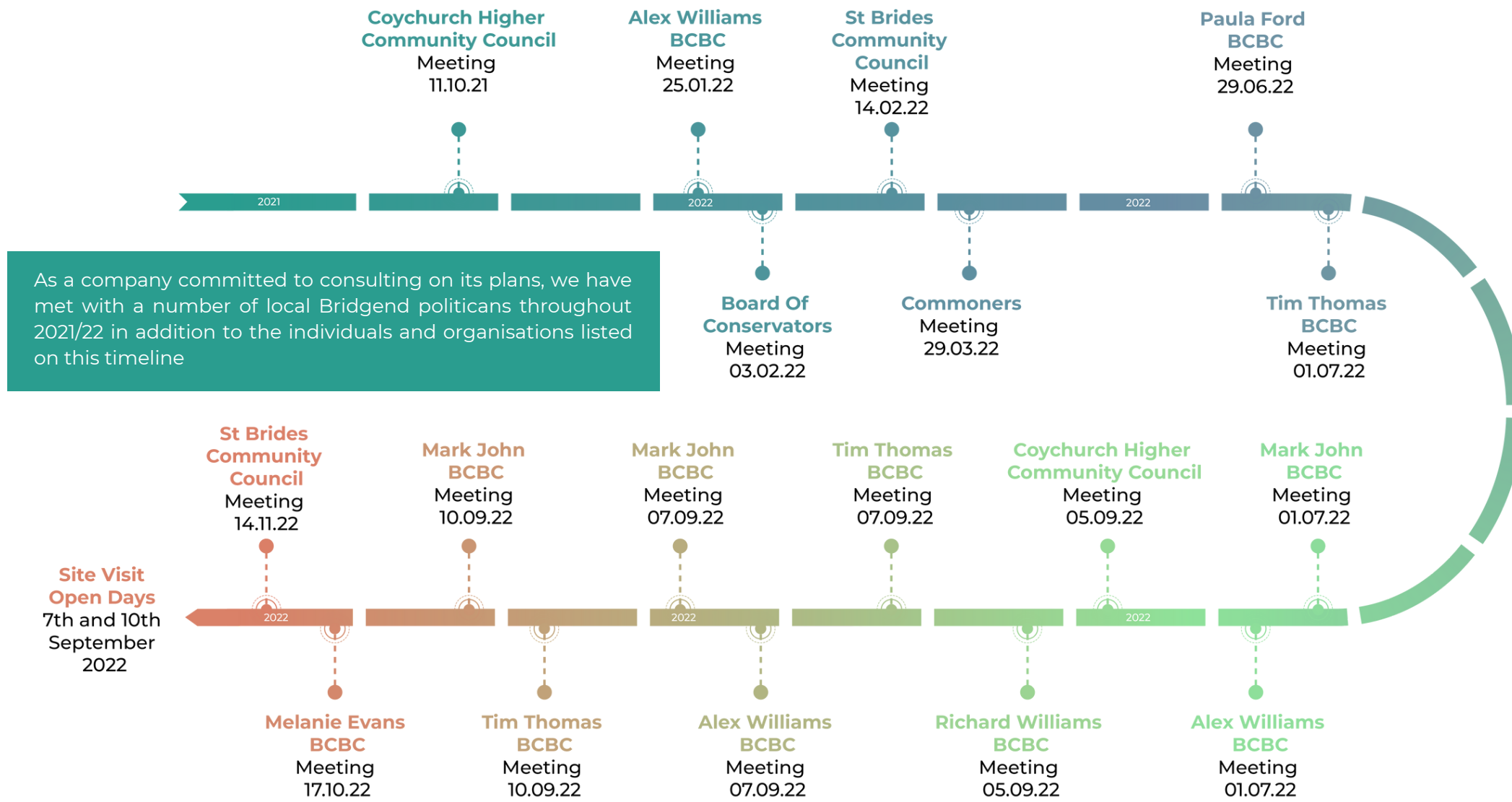
## ACCESS

- Access to the site will be taken from Heol Laethog and the B4280 Pant Hirwaun. Construction HGVs will travel to / from the west along the B4280 Pant Hirwaun to / from the A4061 at Bryncethin.
- Construction HGVs will not travel through Heol y Cyw. There is an existing field access on Heol Laethog and this will be upgraded to enable safe access for construction vehicles.
- There is a 7.5 tonne weight restriction 'except for access' along Heol Laethog. This is an environmental related weight restriction. Construction HGVs would be accessing within this area and thus are permitted to do so. HGV deliveries during the construction phase would all be under traffic management control as part of a Construction Traffic Management Plan so as to maintain highway safety along the access route. Initial assessments indicate that the construction vehicles would not create any significant highway impacts or road safety impacts.

Click the arrow on the right to see a full screen version of this map



# ENGAGEMENT TIMELINE



"We know energy bills are a huge concern for everyone at the moment, and whilst it is not currently possible to power homes directly owing to restrictions and complexities with the Grid, we hope that by building Ty'n y Waun Solar, we can prepare the system now, to make this possible in the not too distant future. The way energy is produced will be very different in the future, as we move away from coal and gas towards an electric economy, a much needed change to ensure we achieve the Wales we want for future generations".

Martyn Popham, Director & Project Lead

## DO YOU HAVE A QUESTION FOR US?

Throughout the planning process we have always welcomed open dialogue with the local community, to ensure all our plans have been properly consulted on.

Should you wish to ask us a question about the project or seek further clarification about anything in this exhibition you can submit a question to us via the link on our website.

Alternatively, you can contact:

Damian Barry - Director  
damian.barry@rpsgroup.com  
029 2066 8662

Jess King - Projects Coordinator  
jessk@cenin.co.uk  
01656 760 550

Ty'n y Waun Solar is a key element of the Bridgend Energy Hub, a landmark scheme that will provide widespread, transformative benefits to Bridgend County Borough and the surrounding area.

Find out more about our plans at [bridgendenergyhub.co.uk](http://bridgendenergyhub.co.uk)

