



BRIDGEND ENERGY HUB



CENIN



Wales is in the midst of a climate emergency which needs urgent solutions, which is why we're proud to provide more information on the Bridgend Energy Hub. A future generations project that integrates the generation of low cost sustainable electricity, using both solar and wind, it will deliver a 100,000 tons per year cut in carbon emissions whilst delivering a host of economic, environmental and transportation benefits to the community.

As a proudly Welsh, locally based company, we want to play our part in helping the transition from fossil fuels to clean, renewable energy sources, ensuring Bridgend and Wales meet their commitments to reaching Net Zero.

We believe that sustainable energy is not just a necessity; it's an opportunity to transform the way we power our world, ensuring we deliver the electric economy that leaves the Wales we want for generations to come.

Each day, as the sun rises, our proposed solar farm at **Ty'n y Waun** will convert sunlight into electricity to provide enough power for 12,500 homes. In addition to the generation of clean, green energy we will also create a unique biodiversity plan for the site, ensuring local wildlife continues to thrive. After a lengthy consultation process, we're delighted to have submitted our planning application to Welsh Government, with a decision expected sometime in 2024 – early 2025.

Our proposed turbines at **Mynydd y Gaer** will harness Wales's limitless resource of wind to create enough clean, green energy for 60,000 homes, whilst supporting the Commoners to manage 1,000 hectares of Common sustainably, whilst improving access to the Common for all to enjoy its natural beauty. We will soon be entering a period of informal consultation for this element of the Hub and would welcome local people's views to shape our plans.

Whilst renewable energy generation is an essential part of the Welsh strategy to combat climate change, this transformative project amplifies its environmental benefits by also proposing the development of an inter-modular travel centre at Junction 36 of the M4 motorway, enabling the power produced to reduce the climate impacts of transportation (the second biggest emitter in Wales).

We want to make sure the **Junction 36 Transport Hub** delivers maximum benefit to residents by giving them more ways to travel at a much lower cost. We want to make it easier for everyone to make the change to lower cost low emission transport. Consultation with residents will begin soon to ensure we explain the concept and understand what local residents want.

Our **Ti'r Isha Employment Area** will be zoned for a purpose-built facility adjacent to the M4, supplying businesses with a significant source of green energy. This will, in turn, create high value sustainable employment for local people as well as attracting 'green' industries and businesses to the Bridgend area.

This transformational project would play a key role in helping Bridgend reach net zero, increasing energy security and affordability, whilst maximising benefit for local people. Our long term vision is for locally produced green energy to power local hospitals, businesses, schools and transportation, whilst helping to enhance the natural environment.

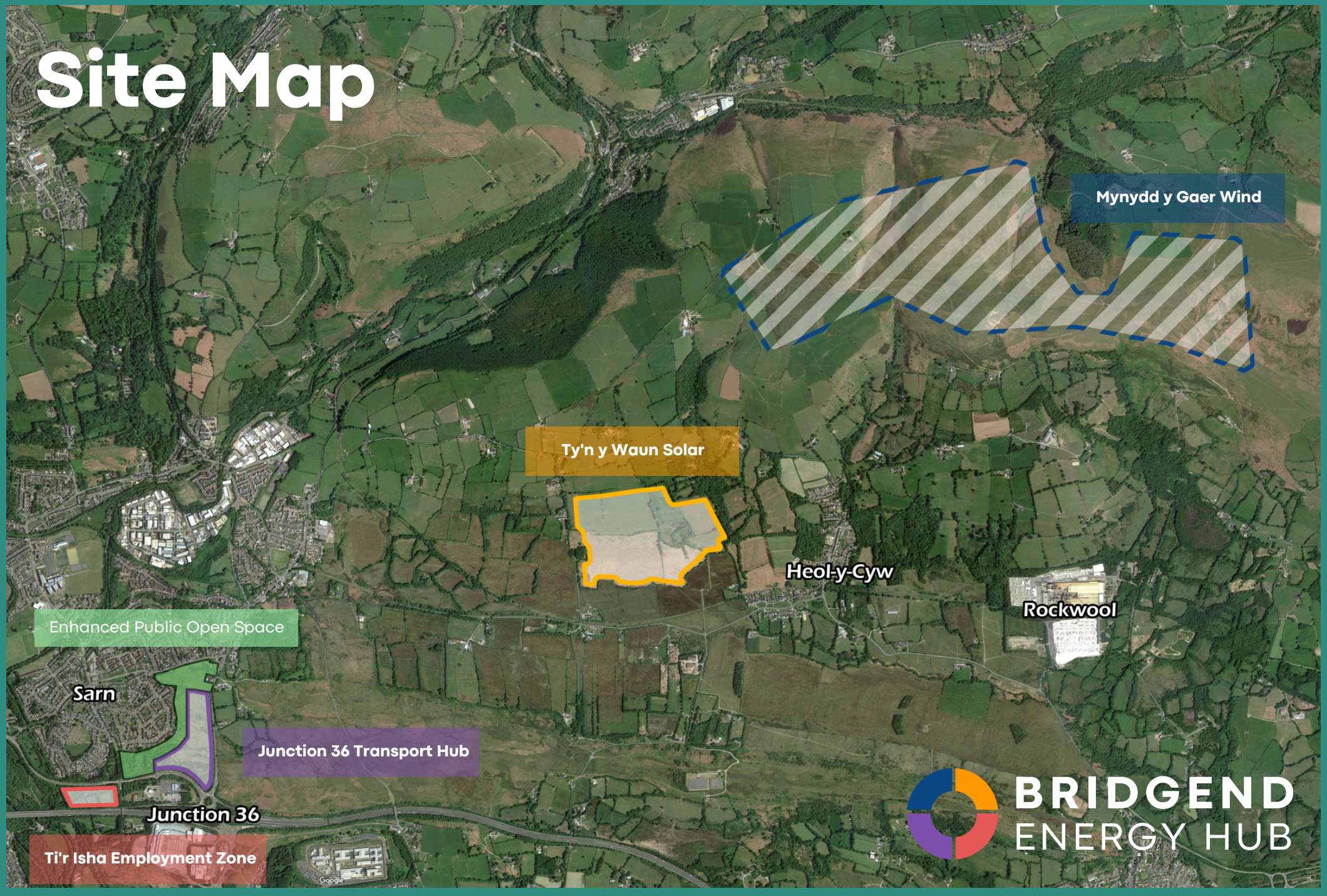
Join us at the forefront of the clean energy revolution by supporting the Bridgend Energy Hub, powering the future, and creating a greener world for us all.

Martyn Popham
Director and Project Lead



BRIDGEND
ENERGY HUB

Site Map



Mynydd y Gaer Wind

Ty'n y Waun Solar

Enhanced Public Open Space

Sarn

Junction 36 Transport Hub

Junction 36

Ti'r Isha Employment Zone

Heol-y-Cyw

Rockwool



BRIDGEND
ENERGY HUB

Mynydd y Gaer Wind

Mynydd y Gaer Wind Farm would sustainably supply the total power needs for 60,000 homes, producing local power that would help Bridgend reach its net-zero aspirations.

Consultation and engagement with local communities, Community Councils, politicians and the general public has been ongoing since 2021, and we will continue this engagement with a number of community events over the Summer, details of which will be sent to Community Councils and posted on CENIN's social media channels.

FAQs

What are the benefits of having a Wind Farm at Mynydd y Gaer?

Wales has a fantastic wind resource and there are major benefits in capturing this low carbon energy. Local generation means more money will be generated in the local community and also gives increased energy security in very unsure times.

Where will the Wind Farm be located?

The wind farm is proposed on Mynydd y Gaer Common found to the north of Heol Y Cyw and to the south east of Blackmill and south of Glynogwr.

Do wind turbines produce noise?

The noise produced by wind turbines is carefully assessed throughout the planning process to make sure the scheme is suitable for the local area. Modern turbines have multiple different noise settings, meaning noise can be fully controlled.

Will the Common still be accessible?

Mynydd y Gaer will remain open and accessible to all including the commoners' graziers.

Why are turbines getting bigger/taller?

As technology develops, turbine towers are becoming taller to reach optimum wind speeds at higher altitudes. Larger rotor diameters allow wind turbines to sweep more area, capture more wind, and produce more electricity, as a result of this, turbines are becoming far more efficient.

Why are wind turbines white?

Wind turbines in the UK are an off-white colour to blend in with cloudy skylines and minimise visual impact. In other countries around the world some wind turbines have red strips around the blades as a way to show that they are proud of their renewable energy, so show it off.

Do you have a question about Mynydd y Gaer Wind that isn't answered here?

Take a look at the FAQs section on our website or e-mail us nextgeneration@bridgendenergyhub.co.uk



BRIDGEND ENERGY HUB





Ty'n y Waun Solar

Ty'n y Waun Solar is an innovative scheme that will bring a wide range of benefits to the local area. The Solar PV project is a cornerstone of the Bridgend Energy Hub, providing enough power for approximately 12,500 homes.

Ty'n y Waun Solar has successfully finished its Pre Application Consultation stage and the full planning application has now been submitted to PEDW at Welsh Government with a decision expected in early 2025.

The project would encompass 35-40MW of South, West and East facing solar PV on poor quality land, which has previously been used as opencast mining.

FAQs

What are the benefits of having a Solar PV Farm at Ty'n y Waun?

Solar power is a low emission form of energy production, and the environmental impact of installation is negligible when compared to the impact of more conventional energy sources. Ty'n y Waun Solar will supply electricity to the local distribution network and produce 35-40MW of electricity every year, that's the equivalent total power required for over 12,500 homes.

Where will the Solar PV Farm be located?

Ty'n y Waun Solar will be located on land between Heol y Cyw and Bryncethin. You can see exactly where this is on the site map on page 3.

“

I am happy that CENIN, a local company, is planning to invest in this area and we will continue to stock the land with sheep that will graze under the solar panels and get shelter from them. This will reduce my costs, giving us better pasture for our sheep to graze, and more fencing and better woodland management which also helps the environment.

Using the land to produce energy and allowing us to continue farming the land makes sense to me.

Eric Avrill
Livestock Farmer at Heol y Cyw

Do solar panels produce noise?

No - solar panels contain no moving parts and thus produce no noise once installed.

Will there be any activity at night?

The site will be in complete darkness at night, with no security lighting.

Do you have a question about Ty'n y Waun Solar that isn't answered here?

Take a look at the FAQs section on our [website](#) or e-mail us nextgeneration@bridgendenergyhub.co.uk

Junction 36 Transport Hub

Located just off the M4 motorway, the Junction 36 Transport Hub will be a travel centre for future transport needs, shaped by the local community to best deliver for the people of Bridgend.

It will enable people to change their mode of transport in one strategic location, by providing bus, car parking and charging, with the ability to car share or move to public transport. There will be sustainable multi-fuel charging facilities on site for all vehicle types (including EV rapid charging). Giving a choice of how someone travels will bring with it benefits in the flexibility, efficiency and reduction in the cost of travel.

Scan the QR code below now to tell us your vision for the future of transport in Bridgend 



Why do we need Transport Hubs?

Transport is one of the largest contributors to CO2 emissions, and without innovative solutions to this problem, we won't reach our net zero targets. By reducing individual travel journeys we hope to reduce the number of drivers and vehicles on the road thus ultimately reducing the vast contribution transport makes towards global warming.

Why at Junction 36 specifically?

Junction 36 is strategically placed at the meeting point of three South Wales Valleys, as well as being easily accessible from Cardiff and Swansea.

2023/24 will see a wide range of consultation and engagement with the local community, ensuring we clearly communicate our vision for the future of transport in the area, as well as our desire to protect local residents' amenities by keeping the public open space and enabling it to thrive.

These are just a few suggestions as to how the Hub could be utilised for the benefit of the local area:



30 acres of designated enhanced spaces for nature conservation



Travel hub accessed by foot, bicycle or private/public transport



Additional safe areas for recreation including well maintained paths for dog walking



Designated to integrate society's needs for MaaS (Mobility as a Service)



Offering choice by providing interconnectivity of transport options



Rapid electric charging for all vehicles including HGVs and Public Service Vehicles



EV hire/ Car Clubs



Locally sourced power and energy storage



The site is to be built incrementally in line with local demand



E bus and taxi overnight parking (with charging)

Ti'r Isha Employment Area

Our Ti'r Isha Employment Area will be zoned for a purpose-built facility adjacent to the M4, supplied by a significant source of green energy which will create high value sustainable employment for local people.

Through plentiful supply of this green energy, we would hope to attract businesses to Bridgend by offering them the ability to use locally produced, affordable energy that would come from our Mynydd y Gaer and Ty'n y Waun developments. This would attract inward investment, aiding local economic growth at a time when increasing energy costs are a major factor for companies.

Plans for the Ti'r Isha Employment Zone are at a relatively early stage and we look forward to releasing more information as we consult with local residents and businesses about our plans.

“

The pathway to net zero will offer opportunities for people to use their expertise in the industries of the future and to develop new skills, as well as providing new and exciting careers for young people
Julia James MS, Minister for Climate Change



"Bridgend Energy Hub will assist the transition of Bridgend into Net Zero, ensuring green energy generation, better transportation, and enabling valuable jobs and economic growth, creating a better Bridgend for future generations"

Martyn Popham
Director & Project Lead



Martyn Popham
Director &
Project Lead



Neil Tapper
Director -
Engineering



Katherine Day
Financial
Controller



Jess King
Projects
Coordinator



Reuben Hamon
Project Designer



Paul Kelliher
Legal Contracts &
Administration
Manager



Joanne Goddard
Education Lead



Clare Brown
Agriculture and
Learning
Coordinator



Planning Partner
rpsgroup.com



Communications Partner
avenue-creative.co.uk



Land Agents
Peter Morris & Jeremy Liley
Farmtrack.co.uk

CENIN aims to expand the use of the power locally, maximising the benefits of the scheme for local people and businesses not just for the 50 year lifespan of the project, but for generations to come.

We will help maintain over 1,000 hectares of common land in collaboration with the Commoners Association, whilst supporting local groups and organisations in and around the local community. To date, we have been delighted to support Heol y Cyw Social Club, Heol y Cyw RFC, Heol y Cyw Welfare Hall, The Welsh U16s Basketball Team and local gymnast, Jade Evans. We would encourage groups or individuals in the Bridgend area to contact us if you or someone you know would benefit from such support.

This is all part of the commitment we make to the communities in which we work, with all of our projects aiming to...

- Provide local energy generation creating economic benefit for the foreseeable future
- Provide annual educational visits for local schools and community groups to visit our sites, to explain how we help deliver the electric economy
- Offer all Year 6s from schools in the local area to visit our Parc Stormy HQ each year, for the life of the project – for free!
- Maintain access to the countryside for wellbeing, exercise and active travel
- Support local clubs and associations in the area
- Help create the 'Wales we want' for our future generations.

You can find more about our commitment to local communities by visiting our website or by contacting a member of the CENIN team.



Mynydd y Gaer Wind

Ty'n y Waun Solar

J36 Transport Hub

Ti'r Isha Employment Zone

CENIN

Find out more or Contact Us:

bridgendenergyhub.co.uk
@CENINGreenPower
info@cenin.co.uk
visitus@cenin.co.uk

All information correct as of July 2023