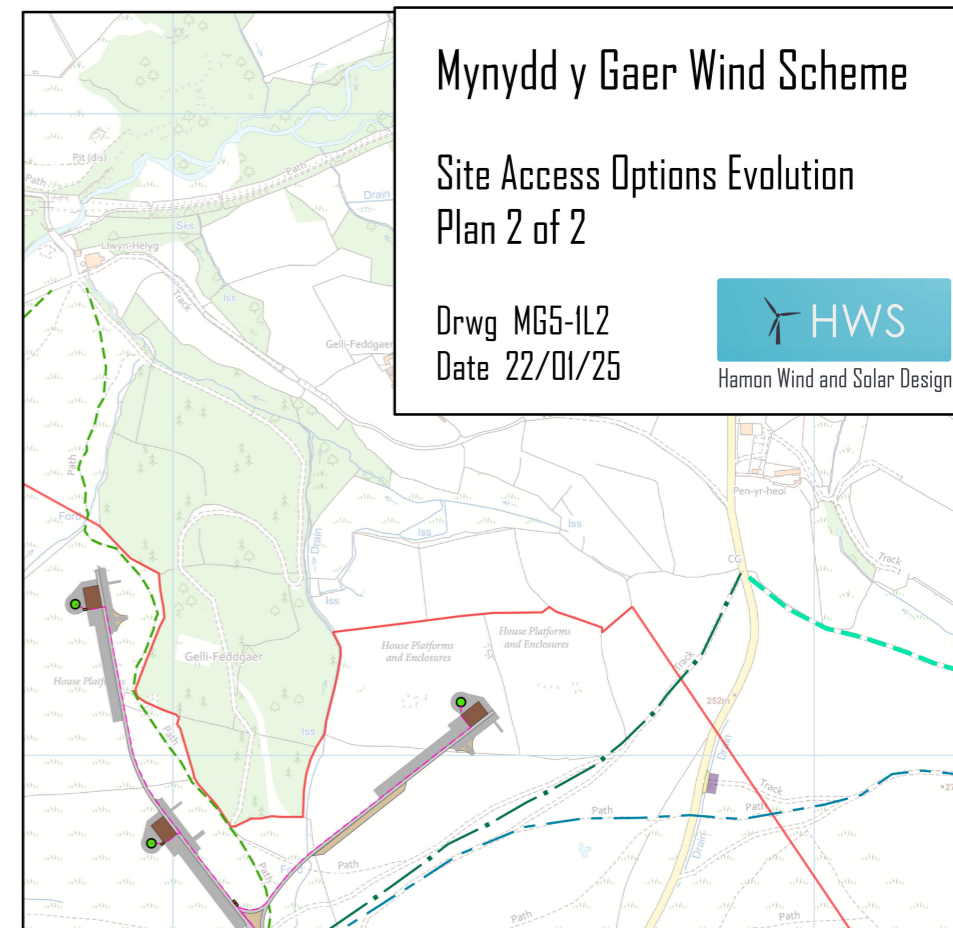
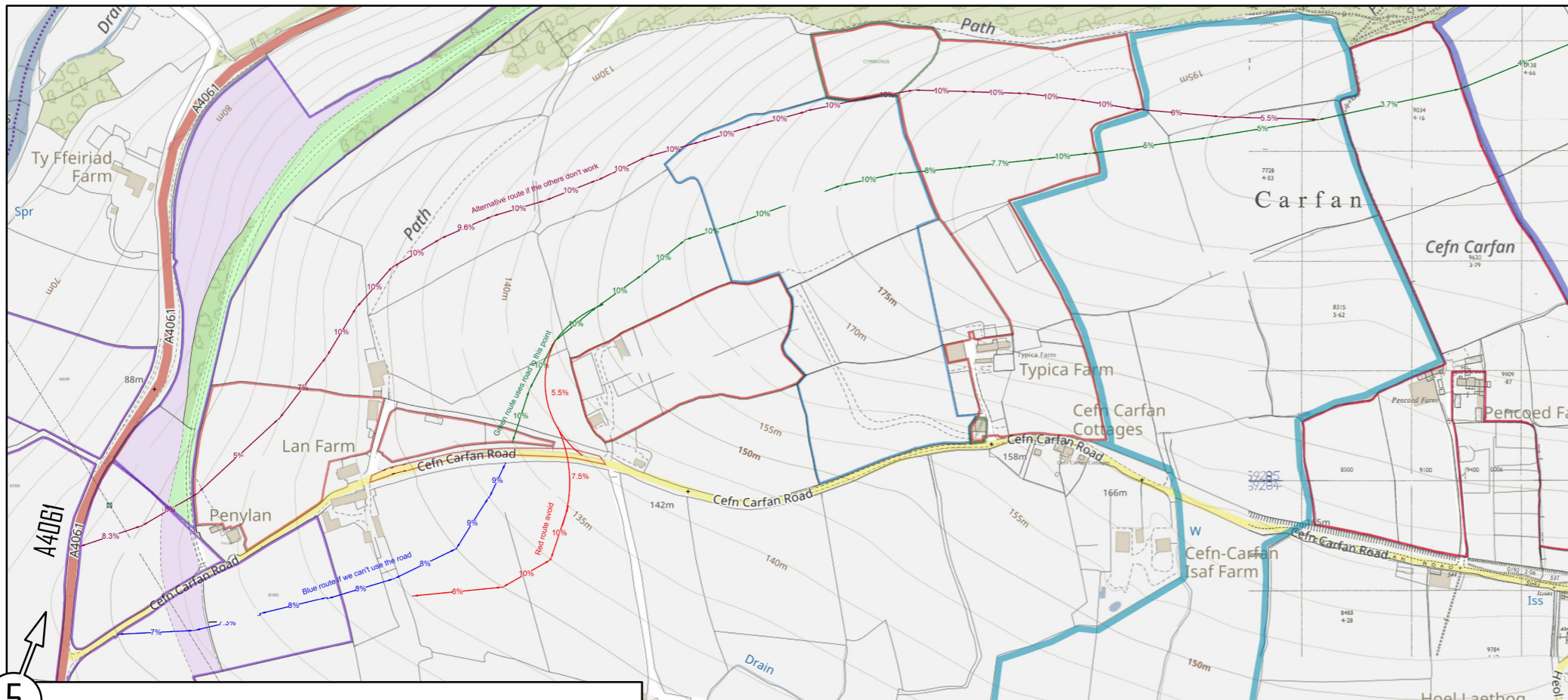


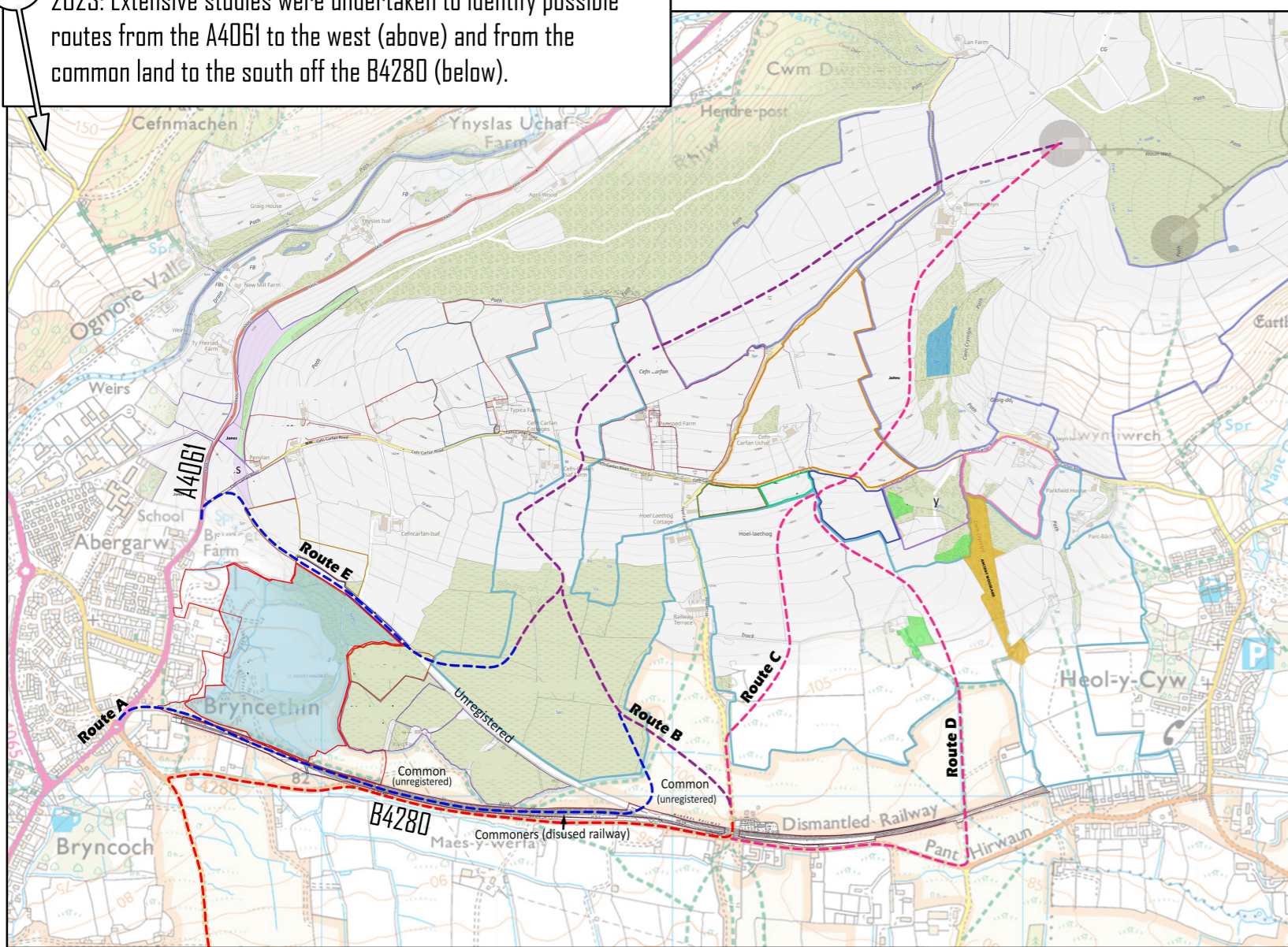
Mynydd y Gaer Wind Scheme

Site Access Options Evolution Plan 2 of 2

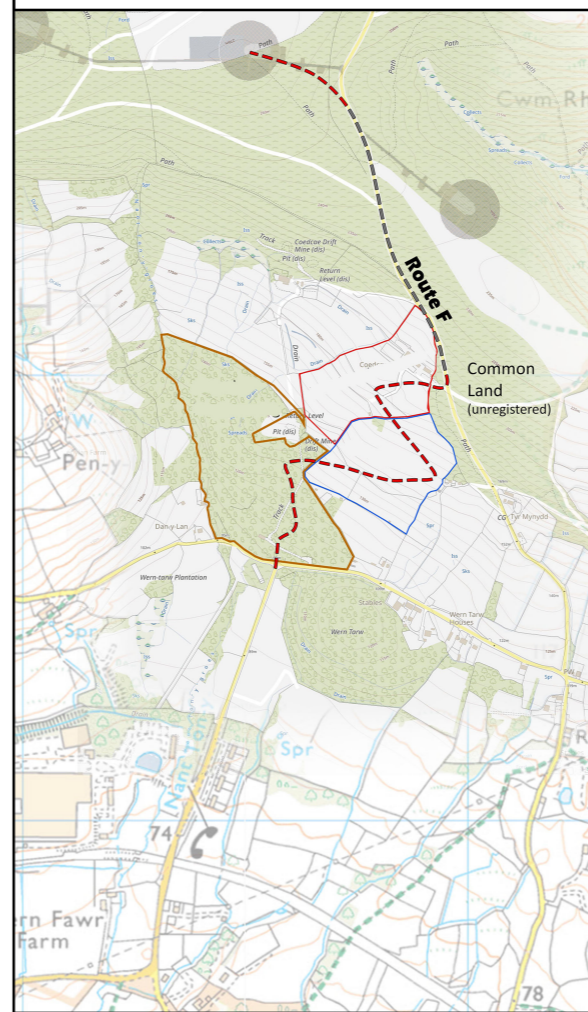
Drwg MG5-IL2
Date 22/01/25



5 2023: Extensive studies were undertaken to identify possible routes from the A4061 to the west (above) and from the common land to the south off the B4280 (below).



6 2023: The route from the south-east past Rockwool was investigated to find a route up the steep incline.



7 2024: The final access was confirmed through collaboration with landowners and the use of the existing track at Wern Tarw that links Bryngarn Road to the common land at the east of the site. Bryngarn Road serving Rockwool has the capacity for large loads being an existing industrial access and provides an excellent route from the M4 for oversized loads off the A473 and B4280.

