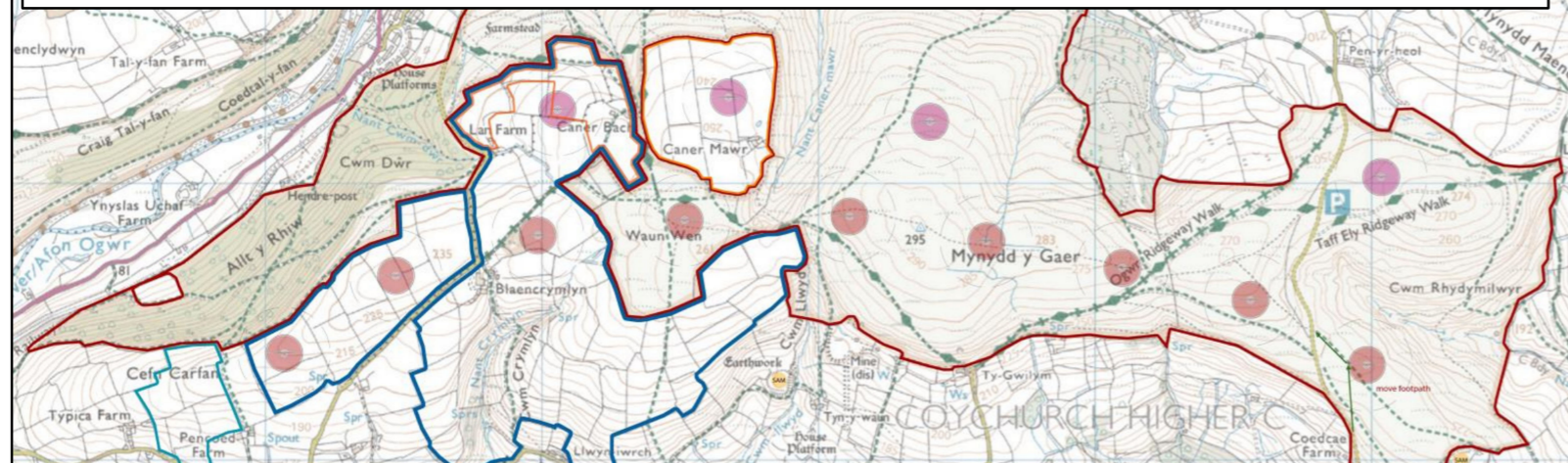
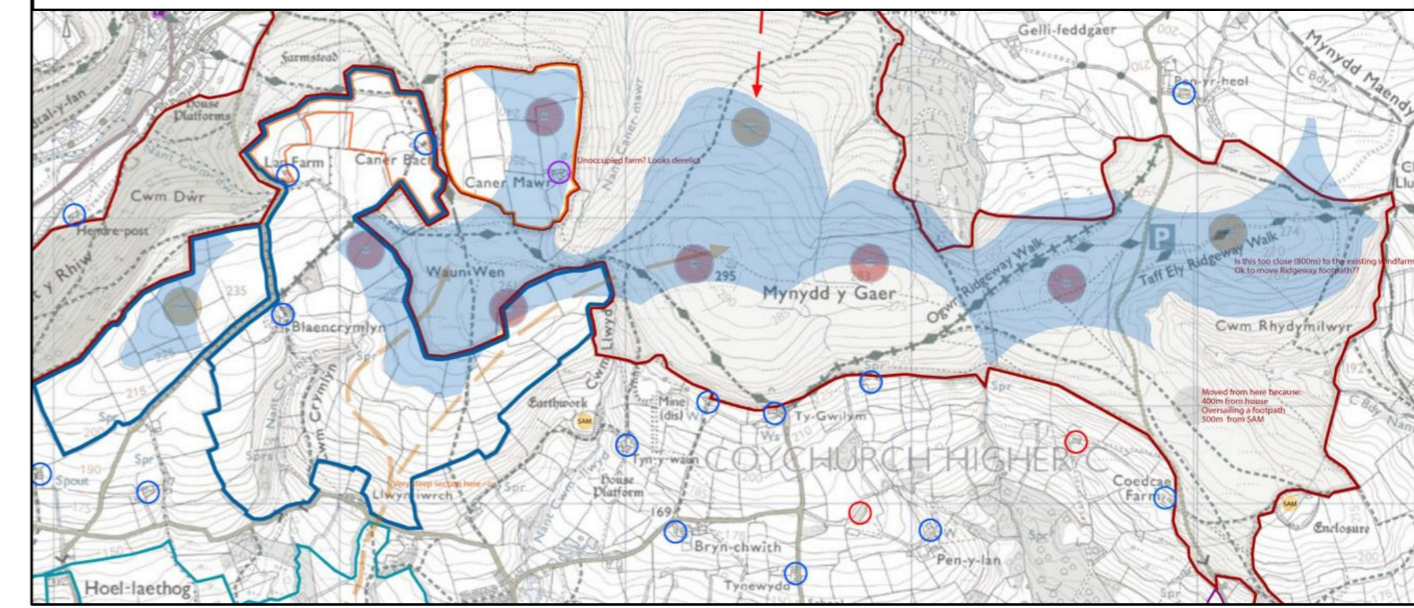


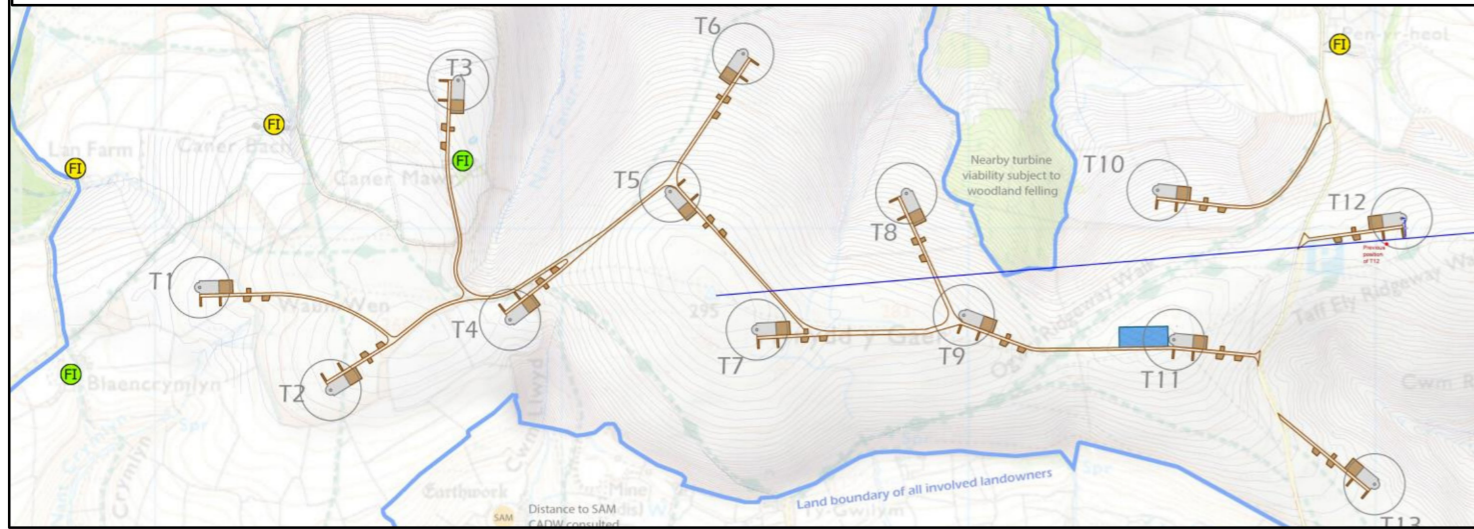
1 2019: Initial site layout with V136 150m tip machines, with closer spacing, 13 turbines total. Two turbines on high ground on farmland near the SSSI woodland.



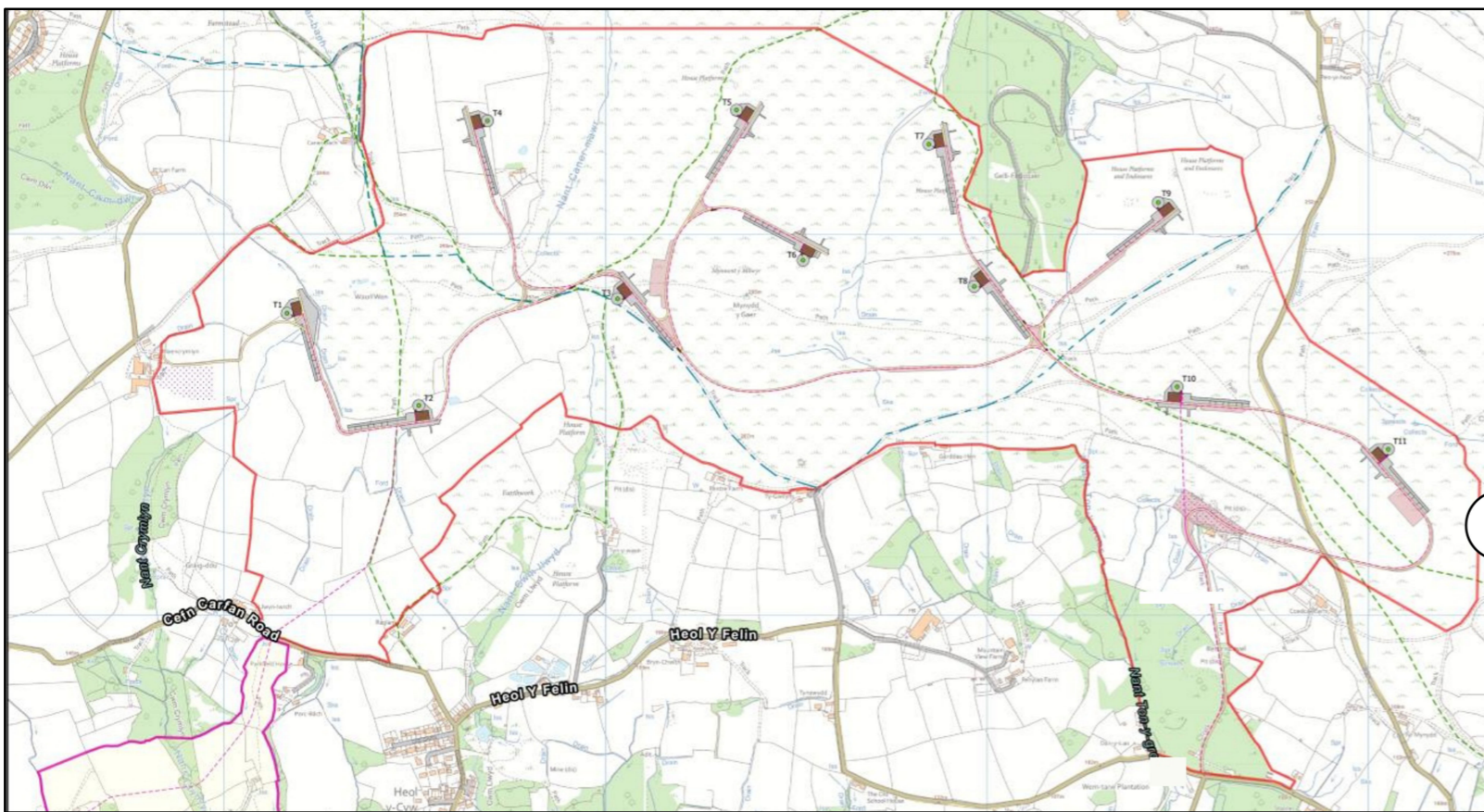
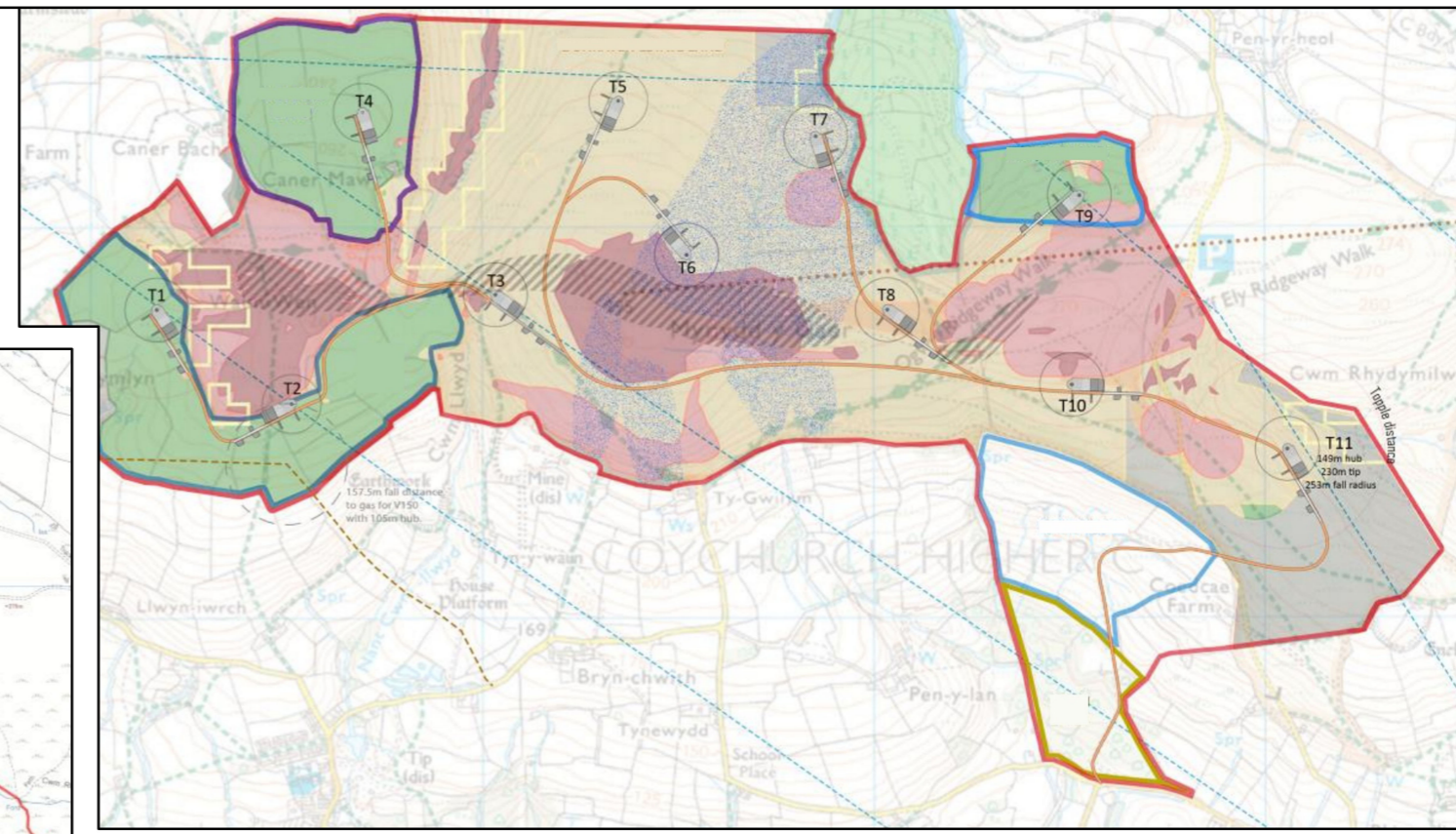
2 2020: Cautious layout option to space turbines more than 400m from houses, move turbines away from the SSSI, and from archaeology to the east. 9 turbines total.



3 2023: Turbine layout incorporating V150 180m tip machines. Line of site for archaeology cleared. Track and detailed hardstandings added. Removed westerly turbines as buffer from SSSI. 13 turbines total.



4 2024: Candidate turbine V162 198m tip. Telecoms operators confirmed areas suitable for turbines. Access route confirmed. Ecology study completed: turbine layout adjusted to avoid sensitive biodiversity. Water run-off areas identified and avoided to mitigate effects on lower properties. 11 turbines total, north-eastern turbine removed as buffer to Taff Ely.



5 2024: Final layout: V162 198m tip used with V150 180m tip placed in more prominent areas. Final micro-siting for ecology and archaeology and heritage. Final track layouts, hardstandings and grid cable routes set. Borrow pits sited.

Mynydd y Gaer Wind Scheme

Site Layout Design Evolution

Drwg MG5-1c
Date 24/01/25

HWS
Hamon Wind and Solar Design