



BRIDGEND
ENERGY HUB

POWERED BY
CENIN

OUR VISION

CENIN is excited to share its plans to develop the Bridgend Energy Hub. The Hub is a transformative scheme that will combine the production of renewable energy for use in the local area, and the development of a sustainable transport hub and employment area at Junction 36 of the M4 motorway.

As society comes to terms with the immense challenges that climate change brings, the need for innovative, energy secure, integrated projects that deliver vital local economic and environmental benefits has never been greater, ensuring Bridgend can produce more of the energy it needs locally and meet its obligation to be Net Zero by 2030.

Renewable energy generation is now the most economical way of producing energy and will become the main source of energy for households, industry, and transport.

We are already in the new, global industrial era of the electric economy, and we want to help ensure Bridgend will be at the forefront of this in Wales.



Martyn Popham
Director & Project Lead

CENIN

CENIN

CENIN is a local Bridgend-based, renewable integrated infrastructure company committed to powering a brighter future.

We are committed to sustainable development as a trusted environmental partner creating valued, renewable-sourced, efficient infrastructure solutions delivered with passion, expertise, teamwork, and a relentless focus on wellbeing for the next generation.

Find out more about us at www.cenin.co.uk



SOLAR

Ty'n Y Waun Solar will supply the total power for 12,500 homes sustainably whilst managing significant areas of natural habitats, protecting local woodland and enhancing the natural environment.

WIND

Mynydd Y Gaer wind farm will supply the total power needs for 45,000 homes sustainably. It will create improved access for walkers and cyclists meaning they are able to use and utilise the common for both leisure and active travel to our proposed Transport Hub at Junction 36.

BRIDGEND
ENERGY HUB

POWERED BY
CENIN

TRANSPORT

The Junction 36 Transport Hub will be a travel centre for future transport needs by allowing the ability to change your mode of transport in one strategic location by providing bus, car parking and charging, with the ability to car share or move to public transport. There will be sustainable multi-fuel charging facilities on site for all vehicle types (including EV rapid charging and hydrogen refuelling)

EMPLOYMENT

Our Tir Isaf Special Employment Area will be zoned for a purpose-built facility adjacent to the M4, supplied by a significant source of green energy which will create high value sustainable employment for local people.

CLEAN LOCAL ENERGY IN CONSULTATION WITH THE COMMUNITY

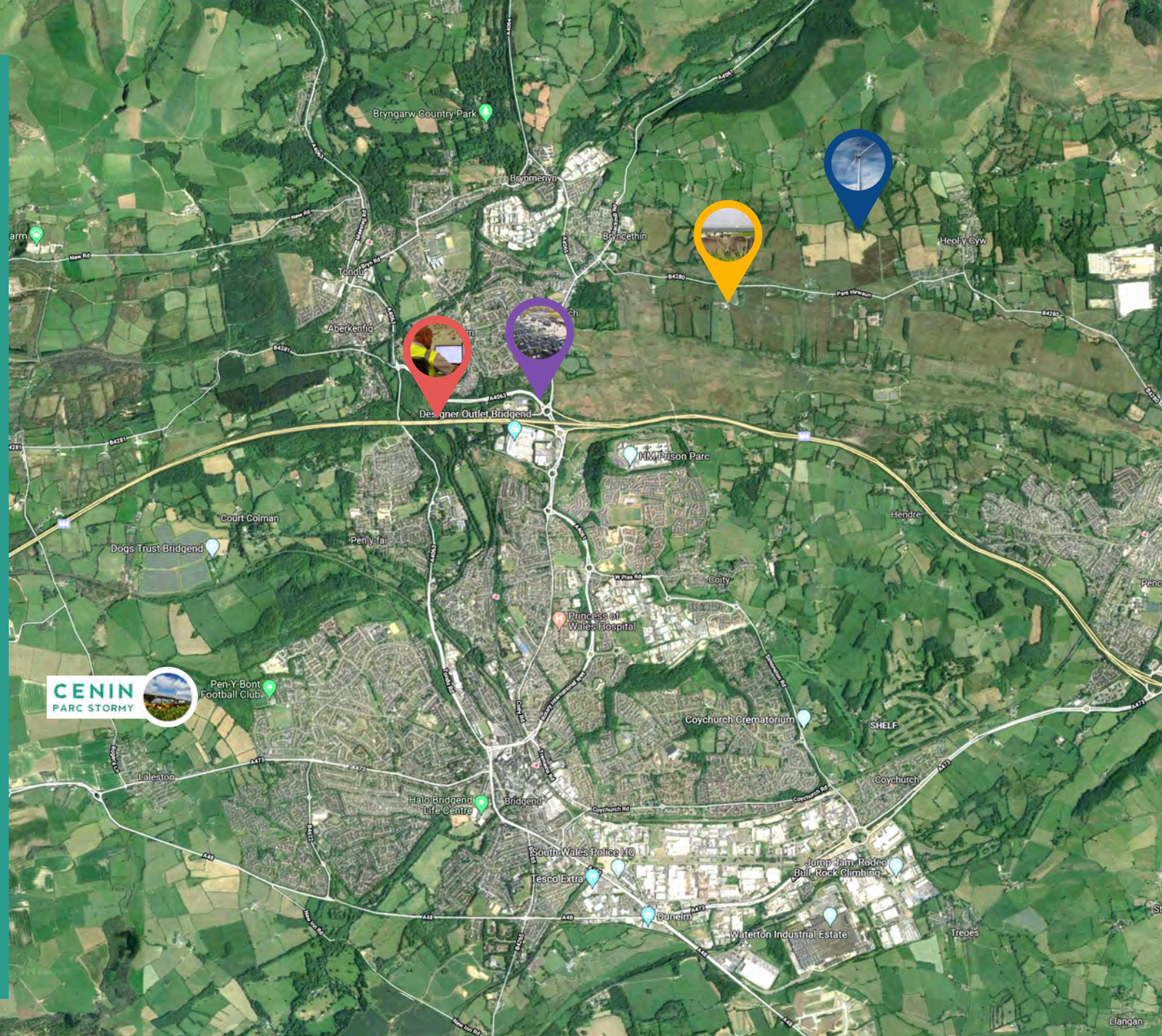
CENIN is committed to local energy for the community and consulting on our plans. Our aim is to bring plans forward with our local authority partners and discuss with local community councils. Everyone in the area will have an opportunity to discuss our plans.

PLANNING FOR THE FUTURE

CENIN believes in planning for the future, and we want to be an enabler for future generations and state of the art renewable energy to equip the Bridgend area with the best resources for energy and transport to increase and safeguard employment and well-being for everyone who lives in Bridgend by creating this local energy network.

BUILDING BETTER

CENIN wants to help in making Bridgend proud of reducing its carbon footprint. The climate change challenges are well known, and local action is required. These plans will ensure that Bridgend is leading the way in providing new energy systems for our future generations.



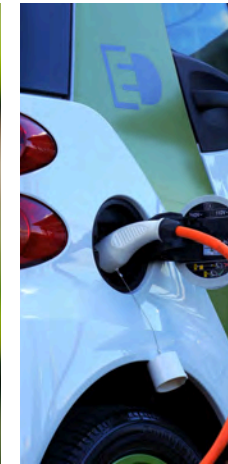
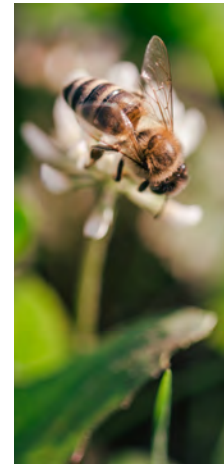
CENIN'S COMMITMENT TO THE COMMUNITY

First and foremost, our vision is to help Bridgend produce more green energy which will help meet its obligation to get to Net Zero by 2030. The local energy will be used by the people of Bridgend for their heat, power, and electric transport requirements.

We also aim to provide further benefits to the local communities in which we operate. We do this in six key ways...

1. **Providing local economic benefit**
2. **Providing an education programme by giving opportunities for schools and community groups to visit our sites and see how we help deliver the electric economy**
3. **Improving access to the countryside for wellbeing, exercise, and active travel**
4. **Protecting native species of bird, plant and tree through carefully researched and managed biodiversity plans**
5. **Supporting local clubs and associations in and around the Bridgend County Borough**
6. **Building Projects that help create the 'Wales we want' for our future generations**

You can find more about our commitment to local communities by visiting our website or by contacting a member of the CENIN team.





FAQs

Why do we need renewable energy sources?

If Wales is to meet its commitment to reaching Net Zero, we as a nation, will need more electricity produced locally, such as wind and solar PV. With UK electricity demand set to double over the next 30 years schemes such as this will be crucial to meeting this additional need. NetZero refers to the balance between the amount of greenhouse gas produced and the amount removed from the atmosphere. We reach NetZero when the amount we add is no more than the amount taken away.

How will local residents benefit from the transport hub?

Our multi-vehicle transport hub will give Bridgend residents a wide range of transport options and the ability to switch between different modes. Giving a choice of how someone travels will bring with it benefits in the flexibility, efficiency, and reduction in the cost of travel.

Will the power produced be used locally?

The energy created by the scheme will power roughly 57,500 homes throughout Bridgend and the surrounding area. It will make a major contribution to the energy demand in Bridgend and create a transport hub and employment zone at Junction 36 of the M4 motorway. To reach NetZero, emissions from homes, transport and industry will need to be cut. In other words, these sectors will have to reduce the amount of carbon they put into the atmosphere.

How can I keep updated on the scheme?

Regular updates will be posted on our website, or you can email us with any specific questions you have about the scheme. Our contact details can be found on the reverse of this brochure and a member of our team will always be happy to help.

For more information about the project or if you wish to submit a question to us, please visit bridgendenergyhub.co.uk

OUR TEAM



Martyn Popham
Director



Neil Tapper
Director - Engineering



Katherine Day
Financial Controller



Jess King
Projects Coordinator



Reuben Hamon
Project Designer



Paul Kelliher
Legal Contracts &
Administration Manager



Joanne Goddard
Community Liaison & Education
Lead

**REDEFINED
PARTNERSHIP**

Communications Partner
redefined.cymru



Planning Partner
rpsgroup.com

Bridgend Energy Hub will assist the transition of Bridgend into Net Zero, ensuring green energy generation, better transportation, and enabling valuable jobs and economic growth, creating a better Bridgend for future generations.

CENIN

bridgendenergyhub.co.uk



nextgeneration@bridgendenergyhub.co.uk



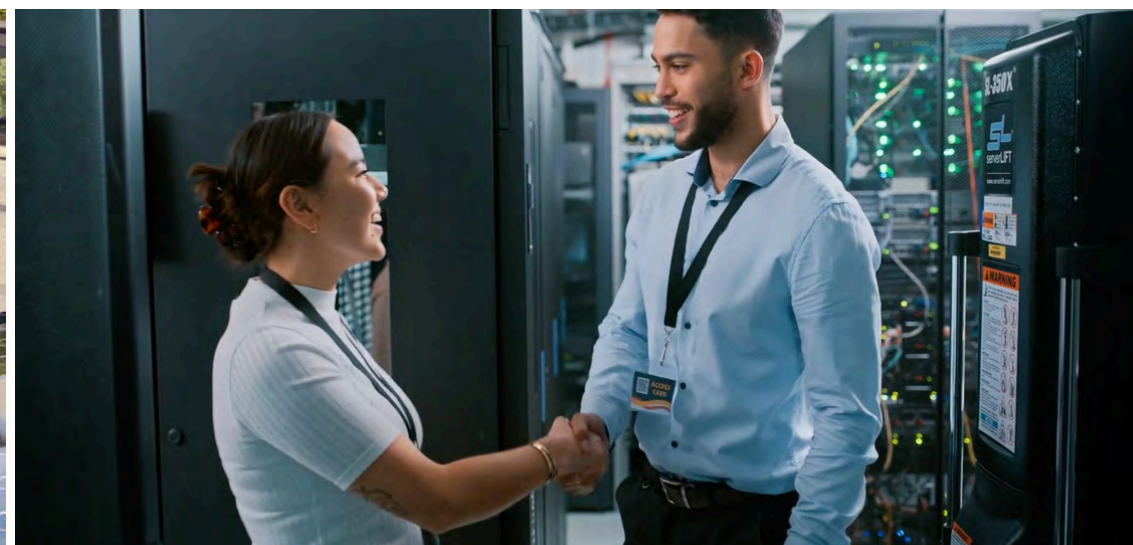
[@CENINGreenPower](https://www.instagram.com/CENINGreenPower)



© CENIN. All rights reserved.
All information provided correct as of December 2021.

BRIDGEND ENERGY HUB

POWERING BRIDGEND TOWARDS NET ZERO



BridgendEnergyHub.co.uk



OUR VISION

CENIN is excited to share its plans to develop the Bridgend Energy Hub. The Hub is a transformative scheme that will combine the production of renewable energy for use in the local area, and the development of a sustainable transport hub and employment area at Junction 36 of the M4 motorway.

As society comes to terms with the immense challenges that climate change brings, the need for innovative, energy secure, integrated projects that deliver vital local economic and environmental benefits has never been greater, ensuring Bridgend can produce more of the energy it needs locally and meet its obligation to be Net Zero by 2030.

Renewable energy generation is now the most economical way of producing energy and will become the main source of energy for households, industry and transport.

We are already in the new, global industrial era of the electric economy and we want to help ensure Bridgend will be at the forefront of this in Wales.



Martyn Popham
Director &
Project Lead



ABOUT US

CENIN

CENIN is a local Bridgend-based, renewable integrated infrastructure company, committed to powering a brighter future.

We are committed to sustainable development as a trusted environmental partner creating valued, renewable-sourced, efficient infrastructure solutions delivered with passion, expertise, teamwork, and a relentless focus on wellbeing for the next generation.

Find out more about us at www.cenin.co.uk

TRANSPORT

The Junction 36 Transport Hub will be a travel centre for future transport needs, by allowing the ability to change your mode of transport in one strategic location, by providing bus, car parking and charging, with the ability to car share or move to public transport. There will be sustainable multi-fuel charging facilities on site for all vehicle types (including EV rapid charging and hydrogen refuelling).



EMPLOYMENT

Our Tir Isaf Special Employment Area will be zoned for a purpose-built facility adjacent to the M4, supplied by a significant source of green energy which will create high value sustainable employment for local people.

WIND

Mynydd y Gaer wind farm will supply the total power needs for 45,000 homes sustainably. It will create improved access for walkers and cyclists, meaning they are able to use and utilise the common for both leisure and active travel to our proposed Transport Hub at Junction 36.



SOLAR

Ty'n y Waun Solar will supply the total power for 12,500 homes sustainably, whilst managing significant areas of natural habitats, protecting local woodland and enhancing the natural environment.

FAQs

Why do we need renewable energy sources?

If Wales is to meet its commitment to reaching Net Zero we, as a nation, will need more electricity produced locally, such as wind and solar PV. With UK electricity demand set to double over the next 30 years, schemes such as this will be crucial to meeting this additional need. Net Zero refers to the balance between the amount of greenhouse gas produced and the amount removed from the atmosphere. We reach Net Zero when the amount we add is no more than the amount taken away.

How will local residents benefit from the transport hub?

Our multi-vehicle transport hub will give Bridgend residents a wide range of transport options and the ability to switch between different modes. Giving a choice of how someone travels will bring with it benefits in the flexibility, efficiency and reduction in the cost of travel.

Will the power produced be used locally?

The energy created by the scheme will power roughly 57,500 homes throughout Bridgend and the surrounding area. It will make a major contribution to the energy demand in Bridgend, and create a transport hub and employment zone at Junction 36 of the M4 motorway. To reach Net Zero, emissions from homes, transport and industry will need to be cut. In other words, these sectors will have to reduce the amount of carbon they put into the atmosphere.

How can I keep updated on the scheme?

Regular updates will be posted on our website, or you can email us with any specific questions you have about the scheme. Our contact details can be found on the reverse of this brochure and a member of our team will always be happy to help.

For more information about the project or if you wish to submit a question to us, please visit bridgendenergyhub.co.uk

OUR TEAM



Martyn Popham
Director



Neil Tapper
Director - Engineering



Katherine Day
Financial Controller



Jess King
Projects Coordinator



Reuben Hamon
Project Designer



Paul Kelliher
Legal Contracts &
Administration Manager



Joanne Goddard
Community Liaison & Education
Lead



Land Agents
Peter Morris & Jeremy Liley
Farmtrack.co.uk

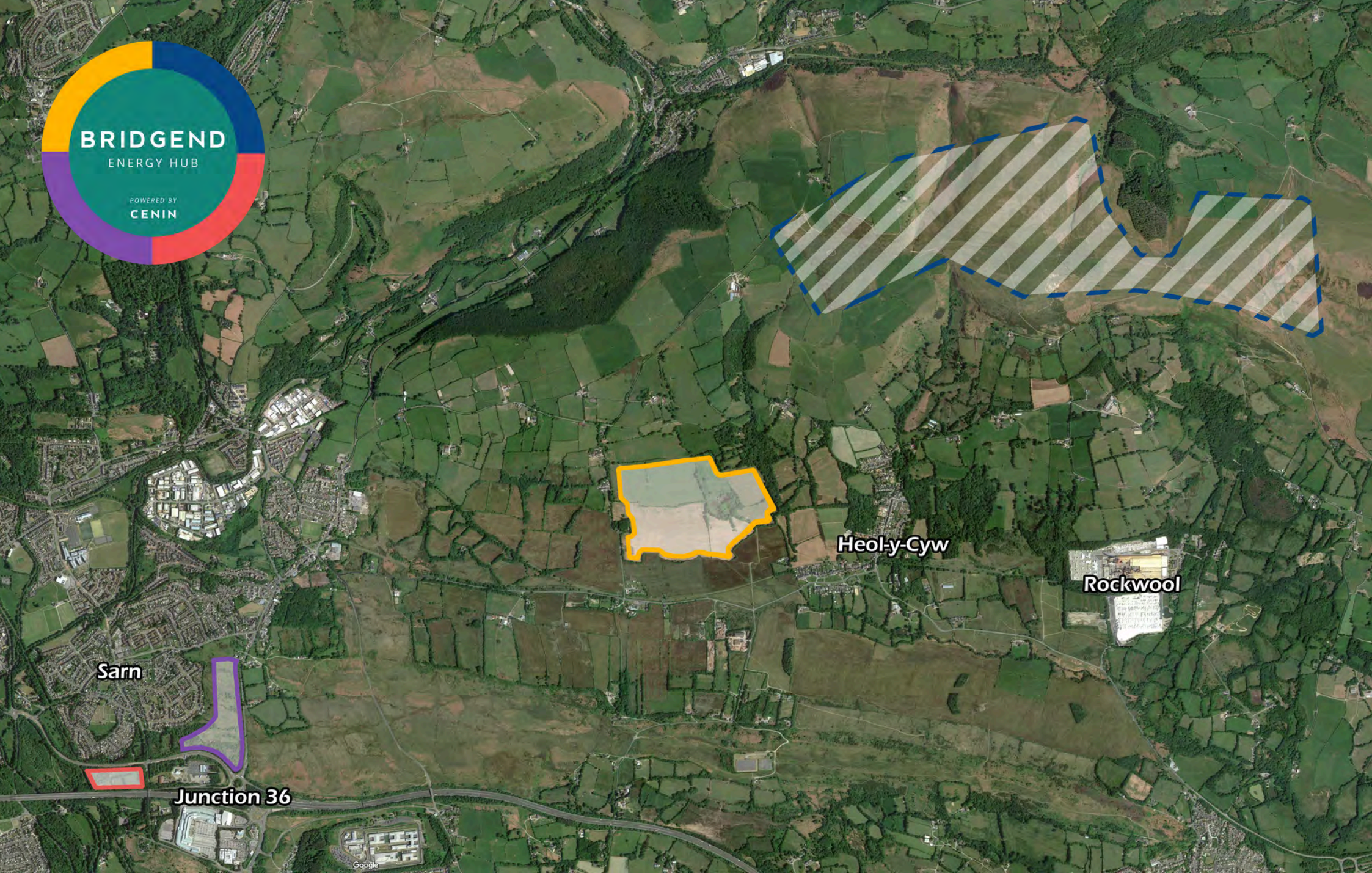
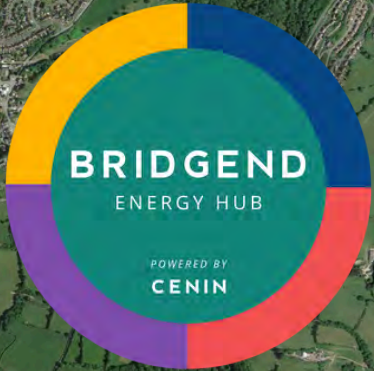


Planning Partner
rpsgroup.com



Communications Partner
redefined.cymru

"Bridgend Energy Hub will assist the transition of Bridgend into Net Zero, ensuring green energy generation, better transportation, and enabling valuable jobs and economic growth, creating a better Bridgend for future generations".



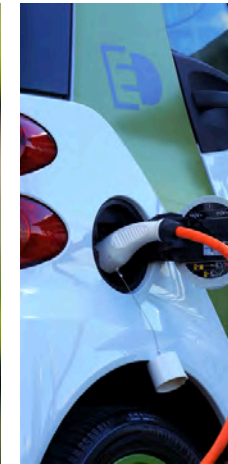
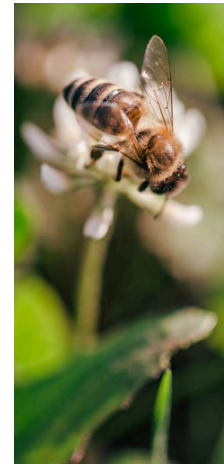
CENIN'S COMMITMENT TO THE COMMUNITY

First and foremost, our vision is to help Bridgend produce more green energy which will help meet its obligation to get to Net Zero by 2030. The local energy will be used by the people of Bridgend for their heat, power and electric transport requirements.

We also aim to provide further benefits to the local communities in which we operate. We do this in six key ways...

1. Providing local economic benefit
2. Providing an education programme by giving opportunities for schools and community groups to visit our sites and see how we help deliver the electric economy
3. Improving access to the countryside for wellbeing, exercise and active travel
4. Protecting native species of bird, plant and tree, through carefully researched and managed biodiversity plans
5. Supporting local clubs and associations in and around the Bridgend County Borough
6. Building projects that help create the 'Wales we want' for our future generations

You can find more about our commitment to local communities by visiting our website or by contacting a member of the CENIN team.



CLEAN LOCAL ENERGY DELIVERED IN CONSULTATION WITH THE COMMUNITY

CENIN is committed to local energy for the community and consulting with them on our plans. Our aim is to bring plans forward with our local authority partners and discuss with local community councils. Everyone in the area will have an opportunity to discuss our plans.

PLANNING FOR THE FUTURE

CENIN believes in planning for the future, and we want to be an enabler for future generations and state of the art renewable energy, to equip the Bridgend area with the best resources for energy, and transport to increase and safeguard employment and wellbeing for everyone who lives in Bridgend, by creating this local energy network.

BUILDING BETTER

CENIN wants to help in making Bridgend proud of reducing its carbon footprint. The climate change challenges are well known and local action is required. These plans will ensure that Bridgend is leading the way in providing new energy systems for our future generations.



CENIN

bridgendenergyhub.co.uk



nextgeneration@bridgendenergyhub.co.uk



[@CENINGreenPower](https://www.instagram.com/CENINGreenPower)



MYNYDD Y GAER WIND

POWERING BRIDGEND TOWARDS NET ZERO



BridgendEnergyHub.co.uk



OUR VISION

CENIN is excited to share its plans to develop Mynydd Y Gaer Wind Farm, a key part of the Bridgend Energy Hub. The Hub is a transformative scheme that will combine the production of renewable energy for use in the local area, and the development of a sustainable transport hub and employment area at Junction 36 of the M4 motorway.

Renewable energy generation is now the most economical way of producing energy and will become the main source of energy for households, industry, and transport.

As society comes to terms with the immense challenges that climate change brings, the need for innovative, energy secure, integrated projects that deliver vital local economic and environmental benefits has never been greater. Wind turbines have become a common part of the landscape in South Wales and Mynydd Y Gaer can help Bridgend produce more of the energy it needs locally and meet its obligation to be Net Zero by 2030.

Mynydd Y Gaer has been identified as a suitable location for wind energy by Welsh Government and as such is designated as a 'Pre-Assessed Area for Wind' we are a Welsh developer that's aim is to ensure that the scheme delivers local benefit. Consultation and Engagement started in 2021 with local Communities, Community Councils, politicians and the general public, and we will be continuing this with a number of community engagement events over the Summer, details of which will be sent to community councils and posted on CENIN's social media channels.

Wind turbines have increased in height over the years to be as efficient as they possibly can be and create the most amount of power. Wind turbines being larger means less of them are needed which is more pleasing to the eye. Larger wind turbines also rotate slower than smaller whizzy turbines, so they have been said to be more graceful in the landscape. Modern Wind turbines have multiple settings for noise and shadow flicker meaning noise levels are controlled and shadow flicker can be managed fully.

Mynydd Y Gaer wind farm will supply the total power needs for **45,000** homes sustainably. We are currently in discussions with the Coity Wallia Commoners Association about how the common could be best used and improved not just for commoners but everyone who lives locally.

Martyn Popham
Director & Project Lead



CENIN

CENIN is a Bridgend-based, renewable integrated infrastructure company committed to powering a brighter future.

We are committed to sustainable development, as a trusted environmental partner creating valued, renewable-sourced, efficient infrastructure solutions delivered with passion, expertise, teamwork, and a relentless focus on wellbeing for the next generation.

CENIN aims to expand the use of the power locally which maximises the benefits of the scheme to local people and businesses.

We also aim to provide further benefits to the local communities in which we operate. We do this in the following ways...

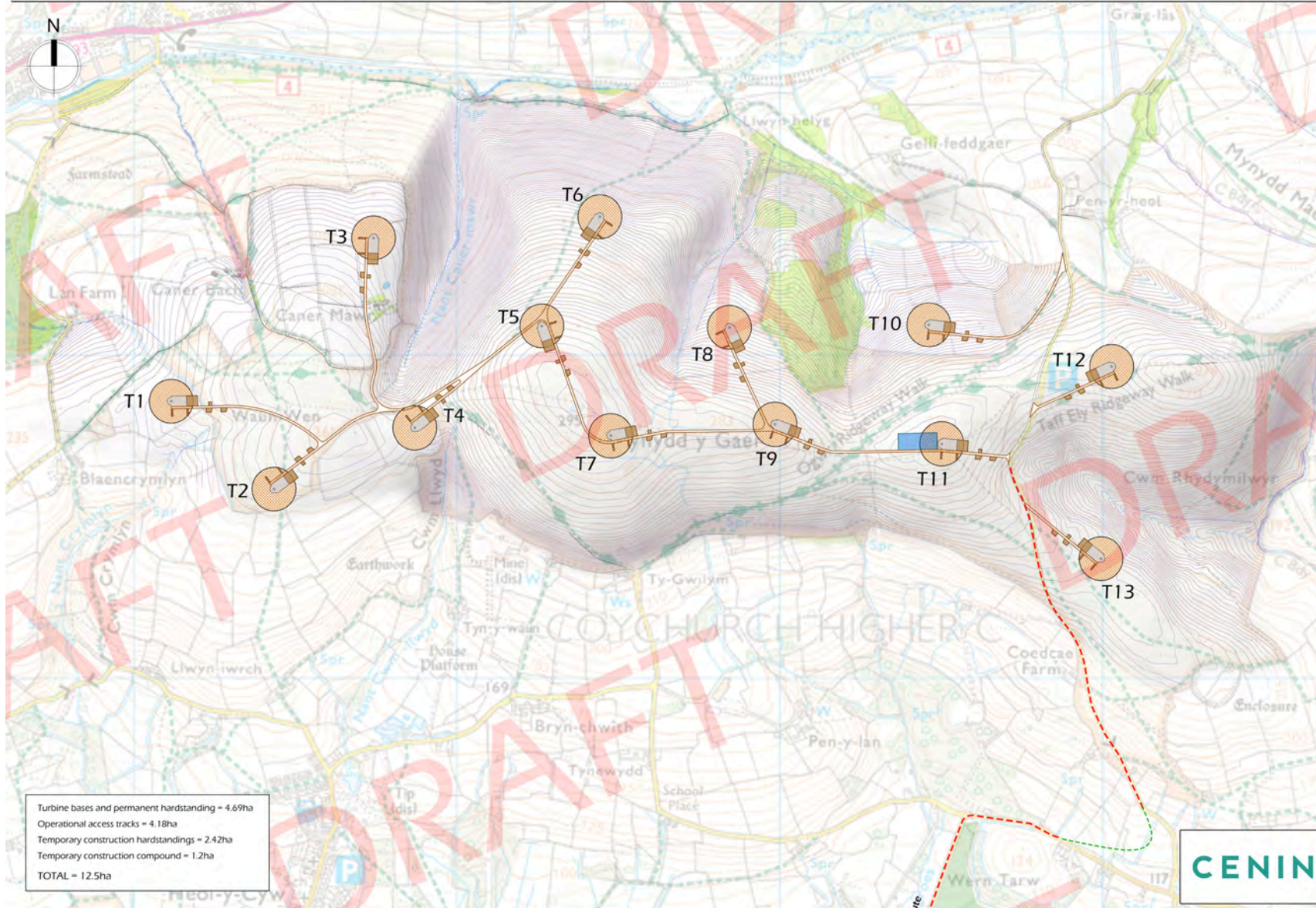
- Provide local energy generation creating economic benefit for the foreseeable future
- Providing annual educational visits for local schools and community groups to visit our sites to explain how we help deliver the electric economy
- Our main site, Parc Stormy, hosts many schools' visits during the academic year. We offer all Year 6s from schools in the area to visit Parc Stormy each year for the life of the project – for free!
- Maintaining access to the countryside for wellbeing, exercise and active travel
- Supporting local clubs and associations in the area
- Building Projects that help create the 'Wales we want' for our future generations



You can find more about our commitment to local communities by visiting our website or by contacting a member of the CENIN team.

Proposed Mynydd y Gaer Wind Farm: Indicative Site layout

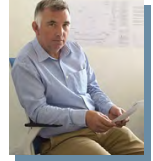
Drwg: MG3-4c April 2023



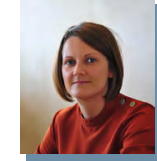
OUR TEAM



Martyn Popham
Director & Project Lead



Neil Tapper
Director - Engineering



Katherine Day
Financial Controller



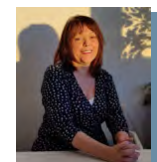
Jess King
Projects Coordinator



Reuben Hamon
Project Designer



Paul Kelliher
Legal Contracts & Administration Manager



Joanne Goddard
Education Lead



Clare Brown
Agriculture and Learning Coordinator



Planning Partner
rpsgroup.com



Communications Partner
avenue-creative.co.uk



Land Agents
Peter Morris & Jeremy Liley
Farmtrack.co.uk



PROJECT TIMELINE

Summer 2023
Engagement with local community

Autumn 2023
Pre Application Consultation (PAC)

Late 2023
Submission to PEDW

Late 2024
Decision

2026/27
Build



FAQs

What are the benefits of having a Wind Farm?

Wales has a fantastic wind resource and there are major benefits in capturing this low carbon energy, local generation means more money will be generated in the local community. It also gives increased Energy Security in very unsure times.

Where will the Wind Farm be located?

The wind farm is proposed on Mynydd Y Gaer Common found to the north of Heol Y Cyw and to the south east of Blackmill and south of Glynogwr.

Will the project really cut Carbon emissions?

Yes, the scheme will have a capacity of 60MW which, in houses for instance, is **45,000** homes, reducing carbon emissions by around **??????** million tonnes over the life of the project.

Who is behind Mynydd y Gaer Wind Farm?

Mynydd y Gaer Wind Farm will be delivered by Bridgend based company CENIN. Visit www.cenin.co.uk to see some examples of our previous, ground-breaking work across Wales.

Do wind turbines produce noise?

The noise produced by wind turbines is carefully assessed throughout the planning process to make sure the scheme is suitable for the local area.

Why renewable energy?

Local renewable energy generation is needed now more than ever. Not only will it help meet climate change targets, but there are also major benefits to energy security when energy is generated locally rather than importing oil and gas from other unstable countries. Locally produced green electricity (also known as the 'Electric Economy') will improve the quality of life for future generations.

Will my energy bills be reduced?

Unfortunately, we cannot directly power local homes with energy generated, this is owing to complexities with how the grid works. In the future, however, this could become a possibility.

However, there are many local advantages which could benefit each and every person. Produced energy at the site will feed directly into the local energy network, providing a stable, cost-effective source of power for Bridgend's surrounding area. We can connect to high energy users/employers who will value cheaper, green, locally produced electricity, which in turn means more jobs and stability created in the valley.

We could also power local community buildings. For example, if we powered the local hospital, they would have lower energy bills so they can arrange more money to go into better equipment and care for patients.

We also want to improve educational opportunities in the surrounding area through CENIN's education streams – Please see 'Our Vision' in this brochure to find out more.

Locally made renewable electricity is cheaper than fossil fuel produced electricity off the grid. This can help make electric cars/buses more affordable and a reality, making mobility for everyone easier and more cost effective.

Local clubs and groups are invited to apply to CENIN for sponsorship to continue and improve their activities and become a lasting part of the community.

CENIN

Contact Us

www.bridgendenergyhub.co.uk


[@CENINGreenPower](https://twitter.com/CENINGreenPower)

info@cenin.co.uk

visitus@cenin.co.uk

All information correct as of April 2023.





BRIDGEND
ENERGY HUB



CENIN



Wales is in the midst of a climate emergency which needs urgent solutions, which is why we're proud to provide more information on the Bridgend Energy Hub. A future generations project that integrates the generation of low cost sustainable electricity, using both solar and wind, it will deliver a 100,000 tons per year cut in carbon emissions whilst delivering a host of economic, environmental and transportation benefits to the community.

As a proudly Welsh, locally based family business, we want to play our part in helping the transition from fossil fuels to clean, renewable energy sources, ensuring Bridgend and Wales meet their commitments to reaching Net Zero.

We believe that sustainable energy is not just a necessity; it's an opportunity to transform the way we power our world, ensuring we deliver the electric economy that leaves the Wales we want for generations to come.

Each day, as the sun rises, our proposed solar farm at **Ty'n y Waun** will convert sunlight into electricity to provide enough power for 12,500 homes. In addition to the generation of clean, green energy we will also create a unique biodiversity plan for the site, ensuring local wildlife continues to thrive. After a lengthy consultation process, we're delighted to have submitted our planning application to Welsh Government, with a decision expected sometime in 2024 – early 2025.

Our proposed turbines at **Mynydd y Gaer** will harness Wales's limitless resource of wind to create enough clean, green energy for 60,000 homes, whilst supporting the Commoners to manage 1,000 hectares of Common sustainably, whilst improving access to the Common for all to enjoy its natural beauty. We will soon be entering a period of informal consultation for this element of the Hub and would welcome local people's views to shape our plans.

Whilst renewable energy generation is an essential part of the Welsh strategy to combat climate change, this transformative project amplifies its environmental benefits by also proposing the development of an inter-modular travel centre at Junction 36 of the M4 motorway, enabling the power produced to reduce the climate impacts of transportation (the second biggest emitter in Wales).

We want to make sure the **Junction 36 Transport Hub** delivers maximum benefit to residents by giving them more ways to travel at a much lower cost. We want to make it easier for everyone to make the change to lower cost low emission transport. Consultation with residents will begin soon to ensure we explain the concept and understand what local residents want.

Our **Ti'r Isha Employment Area** will be zoned for a purpose-built facility adjacent to the M4, supplying businesses with a significant source of green energy. This will, in turn, create high value sustainable employment for local people as well as attracting 'green' industries and businesses to the Bridgend area.

This transformational project would play a key role in helping Bridgend reach net zero, increasing energy security and affordability, whilst maximising benefit for local people. Our long term vision is for locally produced green energy to power local hospitals, businesses, schools and transportation, whilst helping to enhance the natural environment.

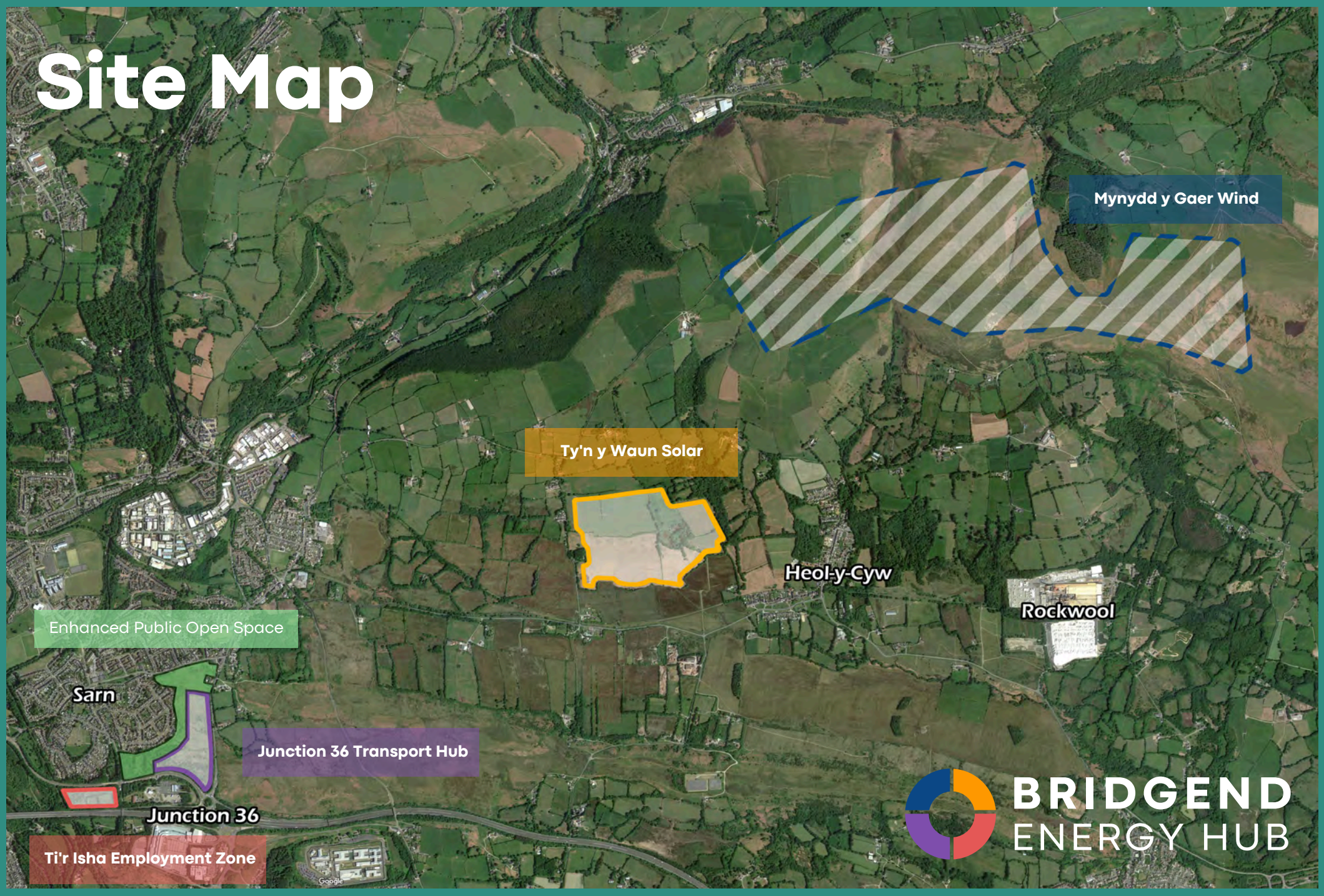
Join us at the forefront of the clean energy revolution by supporting the Bridgend Energy Hub, powering the future, and creating a greener world for us all.

Martyn Popham
Director and Project Lead



BRIDGEND
ENERGY HUB

Site Map



Mynydd y Gaer Wind

Ty'n y Waun Solar

Enhanced Public Open Space

Sarn

Junction 36 Transport Hub

Junction 36

Ti'r Isha Employment Zone

Heol-y-Cyw

Rockwool



BRIDGEND
ENERGY HUB

Mynydd y Gaer Wind

Mynydd y Gaer Wind Farm would sustainably supply the total power needs for 60,000 homes, producing local power that would help Bridgend reach its net-zero aspirations.

Consultation and engagement with local communities, Community Councils, politicians and the general public has been ongoing since 2021, and we will continue this engagement with a number of community events over the Summer, details of which will be sent to Community Councils and posted on CENIN's social media channels.

FAQs

What are the benefits of having a Wind Farm at Mynydd y Gaer?

Wales has a fantastic wind resource and there are major benefits in capturing this low carbon energy. Local generation means more money will be generated in the local community and also gives increased energy security in very unsure times.

Where will the Wind Farm be located?

The wind farm is proposed on Mynydd y Gaer Common found to the north of Heol Y Cyw and to the south east of Blackmill and south of Glynogwr.

Do wind turbines produce noise?

The noise produced by wind turbines is carefully assessed throughout the planning process to make sure the scheme is suitable for the local area. Modern turbines have multiple different noise settings, meaning noise can be fully controlled.

Will the Common still be accessible?

Mynydd y Gaer will remain open and accessible to all including the commoners' graziers.

Why are turbines getting bigger/taller?

As technology develops, turbine towers are becoming taller to reach optimum wind speeds at higher altitudes. Larger rotor diameters allow wind turbines to sweep more area, capture more wind, and produce more electricity, as a result of this, turbines are becoming far more efficient.

Why are wind turbines white?

Wind turbines in the UK are an off-white colour to blend in with cloudy skylines and minimise visual impact. In other countries around the world some wind turbines have red strips around the blades as a way to show that they are proud of their renewable energy, so show it off.

Do you have a question about Mynydd y Gaer Wind that isn't answered here?

Take a look at the FAQs section on our website or e-mail us nextgeneration@bridgendenergyhub.co.uk



BRIDGEND ENERGY HUB





Ty'n y Waun Solar

Ty'n y Waun Solar is an innovative scheme that will bring a wide range of benefits to the local area. The Solar PV project is a cornerstone of the Bridgend Energy Hub, providing enough power for approximately 12,500 homes.

Ty'n y Waun Solar has successfully finished its Pre Application Consultation stage and the full planning application has now been submitted to PEDW at Welsh Government with a decision expected in early 2025.

The project would encompass 35-40MW of South, West and East facing solar PV on poor quality land, which has previously been used as opencast mining.

FAQs

What are the benefits of having a Solar PV Farm at Ty'n y Waun?

Solar power is a low emission form of energy production, and the environmental impact of installation is negligible when compared to the impact of more conventional energy sources. Ty'n y Waun Solar will supply electricity to the local distribution network and produce 35-40MW of electricity every year, that's the equivalent total power required for over 12,500 homes.

Where will the Solar PV Farm be located?

Ty'n y Waun Solar will be located on land between Heol y Cyw and Bryncethin. You can see exactly where this is on the site map on page 3.

“

I am happy that CENIN, a local company, is planning to invest in this area and we will continue to stock the land with sheep that will graze under the solar panels and get shelter from them. This will reduce my costs, giving us better pasture for our sheep to graze, and more fencing and better woodland management which also helps the environment.

Using the land to produce energy and allowing us to continue farming the land makes sense to me.

Eric Avrill

Livestock Farmer at Heol y Cyw

Do solar panels produce noise?

No - solar panels contain no moving parts and thus produce no noise once installed.

Will there be any activity at night?

The site will be in complete darkness at night, with no security lighting.

Do you have a question about Ty'n y Waun Solar that isn't answered here?

Take a look at the FAQs section on our website or e-mail us nextgeneration@bridgendenergyhub.co.uk

Junction 36 Transport Hub

Located just off the M4 motorway, the Junction 36 Transport Hub will be a travel centre for future transport needs, shaped by the local community to best deliver for the people of Bridgend.

It will enable people to change their mode of transport in one strategic location, by providing bus, car parking and charging, with the ability to car share or move to public transport. There will be sustainable multi-fuel charging facilities on site for all vehicle types (including EV rapid charging). Giving a choice of how someone travels will bring with it benefits in the flexibility, efficiency and reduction in the cost of travel.

Scan the QR code below now to tell us your vision for the future of transport in Bridgend 



Why do we need Transport Hubs?

Transport is one of the largest contributors to CO2 emissions, and without innovative solutions to this problem, we won't reach our net zero targets. By reducing individual travel journeys we hope to reduce the number of drivers and vehicles on the road thus ultimately reducing the vast contribution transport makes towards global warming.

Why at Junction 36 specifically?

Junction 36 is strategically placed at the meeting point of three South Wales Valleys, as well as being easily accessible from Cardiff and Swansea.

2023/24 will see a wide range of consultation and engagement with the local community, ensuring we clearly communicate our vision for the future of transport in the area, as well as our desire to protect local residents' amenities by keeping the public open space and enabling it to thrive.

These are just a few suggestions as to how the Hub could be utilised for the benefit of the local area:



30 acres of designated enhanced spaces for nature conservation



Travel hub accessed by foot, bicycle or private/public transport



Additional safe areas for recreation including well maintained paths for dog walking



Designated to integrate society's needs for MaaS (Mobility as a Service)



Offering choice by providing interconnectivity of transport options



Rapid electric charging for all vehicles including HGVs and Public Service Vehicles



EV hire/ Car Clubs



Locally sourced power and energy storage



The site is to be built incrementally in line with local demand



E bus and taxi overnight parking (with charging)

Ti'r Isha Employment Area

Our Ti'r Isha Employment Area will be zoned for a purpose-built facility adjacent to the M4, supplied by a significant source of green energy which will create high value sustainable employment for local people.

Through plentiful supply of this green energy, we would hope to attract businesses to Bridgend by offering them the ability to use locally produced, affordable energy that would come from our Mynydd y Gaer and Ty'n y Waun developments. This would attract inward investment, aiding local economic growth at a time when increasing energy costs are a major factor for companies.

Plans for the Ti'r Isha Employment Zone are at a relatively early stage and we look forward to releasing more information as we consult with local residents and businesses about our plans.

“

The pathway to net zero will offer opportunities for people to use their expertise in the industries of the future and to develop new skills, as well as providing new and exciting careers for young people
Julia James MS, Minister for Climate Change



"Bridgend Energy Hub will assist the transition of Bridgend into Net Zero, ensuring green energy generation, better transportation, and enabling valuable jobs and economic growth, creating a better Bridgend for future generations"

Martyn Popham
Director & Project Lead



Martyn Popham
Director &
Project Lead



Neil Tapper
Director -
Engineering



Katherine Day
Financial
Controller



Jess King
Projects
Coordinator



Reuben Hamon
Project Designer



Paul Kelliher
Legal Contracts &
Administration
Manager



Joanne Goddard
Education Lead



Clare Brown
Agriculture and
Learning
Coordinator



Planning Partner
rpsgroup.com



Communications Partner
avenue-creative.co.uk



Land Agents
Peter Morris & Jeremy Liley
Farmtrack.co.uk

CENIN aims to expand the use of the power locally, maximising the benefits of the scheme for local people and businesses not just for the 50 year lifespan of the project, but for generations to come.

We will help maintain over 1,000 hectares of common land in collaboration with the Commoners Association, whilst supporting local groups and organisations in and around the local community. To date, we have been delighted to support Heol y Cyw Social Club, Heol y Cyw RFC, Heol y Cyw Welfare Hall, The Welsh U16s Basketball Team and local gymnast, Jade Evans. We would encourage groups or individuals in the Bridgend area to contact us if you or someone you know would benefit from such support.

This is all part of the commitment we make to the communities in which we work, with all of our projects aiming to...

- Provide local energy generation creating economic benefit for the foreseeable future
- Provide annual educational visits for local schools and community groups to visit our sites, to explain how we help deliver the electric economy
- Offer all Year 6s from schools in the local area to visit our Parc Stormy HQ each year, for the life of the project – for free!
- Maintain access to the countryside for wellbeing, exercise and active travel
- Support local clubs and associations in the area
- Help create the 'Wales we want' for our future generations.

You can find more about our commitment to local communities by visiting our website or by contacting a member of the CENIN team.



Mynydd y Gaer Wind

Ty'n y Waun Solar

J36 Transport Hub

Ti'r Isha Employment Zone

CENIN

Find out more or Contact Us:

bridgendenergyhub.co.uk
@CENINGreenPower
info@cenin.co.uk
visitus@cenin.co.uk

All information correct as of October 2023

Mynydd y Gaer Wind



CENIN is excited to share its plans to develop Mynydd y Gaer Wind Farm, a key part of the Bridgend Energy Hub that will supply the total power needs for 60,000 homes, sustainably.

The Hub is a transformative scheme that will combine the production of renewable energy for use in the local area, and the development of a sustainable transport hub and employment area at Junction 36 of the M4 motorway.

Renewable energy generation is now the most economical way of producing energy and will become the main source of energy for households, industry and transport.

As society comes to terms with the immense challenges that climate change brings, the need for innovative, energy secure, integrated projects that deliver vital local economic and environmental benefits has never been greater.

Wind turbines have become a common part of the landscape in South Wales and Mynydd y Gaer can help Bridgend produce more of the energy it needs locally, helping meet its obligation to reach net zero by 2030.

Mynydd y Gaer has been identified as a suitable location for wind energy by Welsh Government and, as such, is designated as a 'Pre-Assessed Area for Wind'. We are a Welsh developer that's aim is to ensure that the scheme delivers local benefit.

Consultation and Engagement started in 2021 with local communities, community councils, politicians and the general public, and we will be continuing this with a number of community engagement events over the Summer, details of which will be sent to community councils and posted on CENIN's social media channels.

Wind turbines have increased in height over the years, to be as efficient as they possibly can be, meaning fewer turbines are required to generate the same power output. Larger wind turbines also rotate slower than smaller, more 'whizzy' turbines, and have multiple settings for noise and shadow flicker, meaning noise levels are controlled and shadow flicker can be managed fully.

We are currently in discussions with the Coity Wallia Commoners Association about how the Common could be best used and improved not just for commoners, but everyone who lives locally.

Martyn Popham **Director and Project Lead**



Martyn Popham
Director & Project Lead



Neil Tapper
Director - Engineering



Katherine Day
Financial Controller



Jess King
Projects Coordinator



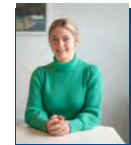
Reuben Hamon
Project Designer



Paul Kelliher
Legal Contracts & Administration Manager



Joanne Goddard
Education Lead



Claire Brown
Agriculture and Learning Coordinator



Planning Partner
rpsgroup.com



Communications Partner
avenue-creative.co.uk



Land Agents
Peter Morris & Jeremy Liley
Farmtrack.co.uk



FAQs

What are the benefits of having a Wind Farm?

Wales has a fantastic wind resource and there are major benefits in capturing this low carbon energy. Local generation means more money will be generated in the local community and also gives increased energy security in very unsure times.

Where will the Wind Farm be located?

The wind farm is proposed on Mynydd y Gaer Common found to the north of Heol y Cyw and to the south east of Blackmill and south of Glynogwr.

Will the project really cut carbon emissions?

Yes, the scheme will have a capacity of 60MW which, in houses for instance, is 60,000 homes.

Do wind turbines produce noise?

The noise produced by wind turbines is carefully assessed throughout the planning process to make sure the scheme is suitable for the local area. Modern turbines have multiple different noise settings, meaning noise can be fully controlled.

What is shadow flicker?

Shadow flicker is the flickering effect caused when rotating wind turbine blades periodically cast shadows through constrained openings, such as the windows of neighbouring properties. The effects of shadow flicker on affected areas are seriously assessed throughout the planning process. There are multiple settings on the turbines that can prevent the shadow casting near your property, including a shutdown scheme at certain hours.

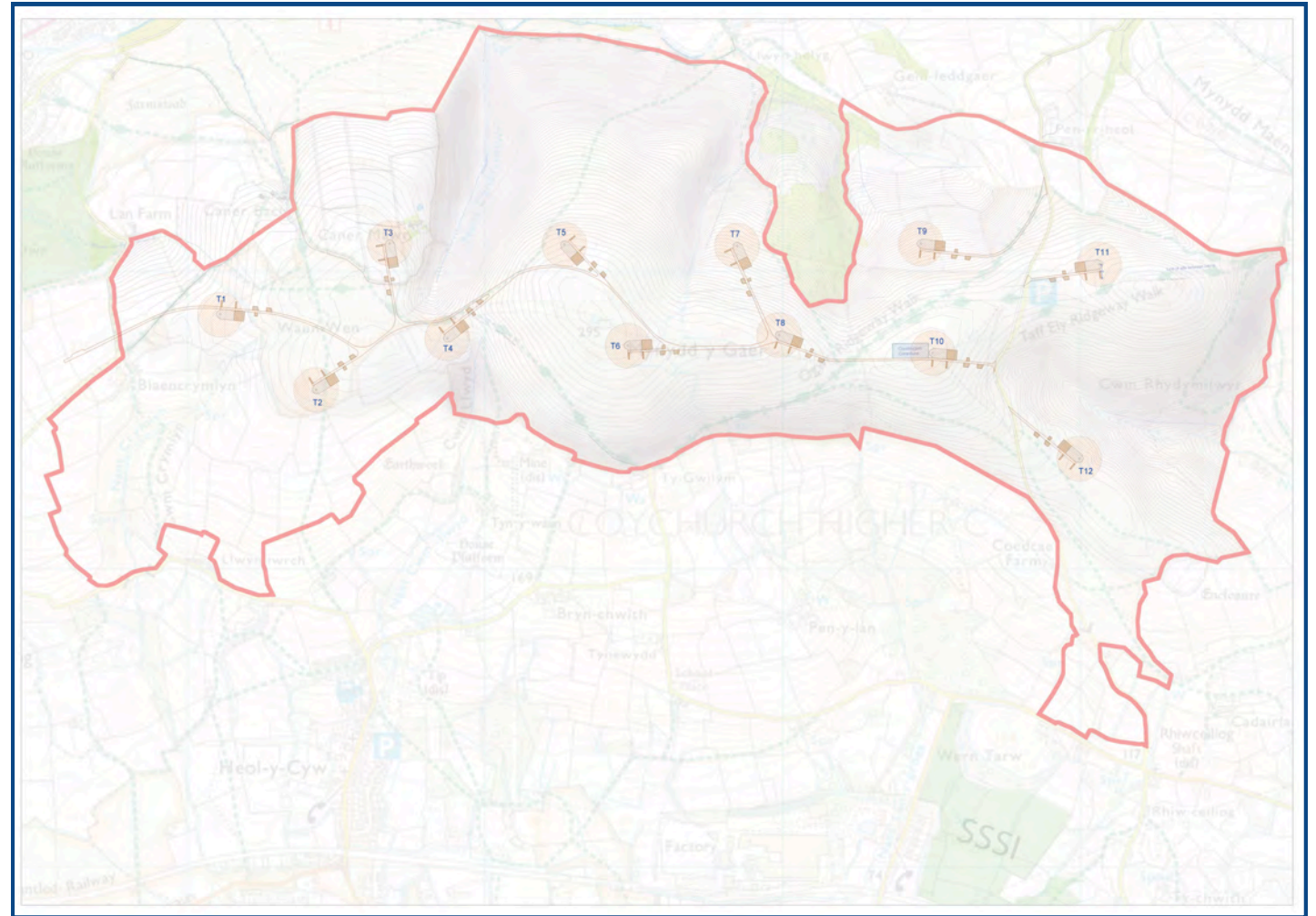
Will the Common still be accessible?

Mynydd y Gaer will remain open and accessible to all including the commoners' graziers.

How often are the turbines serviced?

Once constructed, work on the turbines is minimal – they are usually serviced every six months.

Indicative Layout



What are the effects on the landscape?

As wind turbine technology advances, we believe this results in having less of an impact on the landscape. For example, a modern turbine now has the capacity to produce 5MW of power, a vast increase on the output of smaller turbines (approx. 500kW each). This would mean that in order to build a 25MW wind farm, you would need five large wind turbines or 50 smaller turbines. As a conscientious developer we take the view that less, but ultimately larger turbines, fit better in the landscape and are more visually pleasing.



Do you have a question about Mynydd y Gaer Wind that isn't answered here? Take a look at the FAQs section on our website or e-mail us nextgeneration@bridgendenergyhub.co.uk



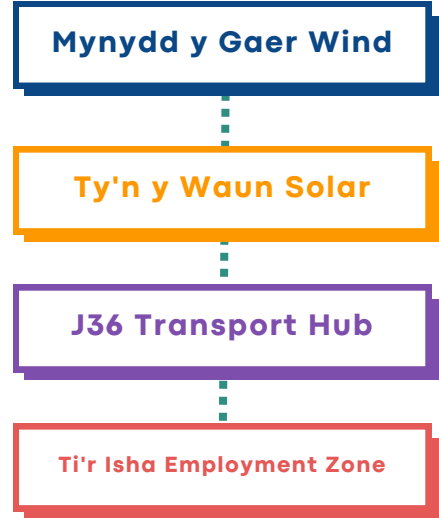
CENIN aims to expand the use of the power locally, maximising the benefits of the scheme for local people and businesses not just for the 50 year lifespan of the project, but for generations to come.

We will help to maintain over 1,000 hectares of common land in collaboration with the Commoners Association, whilst supporting local groups and organisations in and around the local community.

This is all part of the commitment we make to the communities in which we work, with all of our projects aiming to...

- Provide local energy generation creating economic benefit for the foreseeable future
- Provide annual educational visits for local schools and community groups to visit our sites, to explain how we help deliver the electric economy
- Offer all Year 6s from schools in the local area to visit our Parc Stormy HQ each year, for the life of the project – for free!
- Maintain access to the countryside for wellbeing, exercise and active travel
- Support local clubs and associations in the area
- Help create the 'Wales we want' for our future generations.

You can find more about our commitment to local communities by visiting our website or by contacting a member of the CENIN team.



CENIN

Find out more or Contact Us:

www.bridgendenergyhub.co.uk
 @CENINGreenPower
info@cenin.co.uk
visitus@cenin.co.uk

All information correct as of October 2023



BRIDGEND ENERGY HUB

Project Update
March 2024

CENIN

Wales is in a climate emergency which needs urgent action, which is why we're proud to introduce the Bridgend Energy Hub.

This future generations project that integrates the generation of low-cost sustainable electricity, using both solar and wind, it will deliver major economic, environmental and transportation benefits to Bridgend.

As a proudly local, family-owned company, we want to help the transition from fossil fuels to clean, locally produced, renewable energy sources.

We believe that sustainable energy is not just a necessity; it's an opportunity to transform the way we power our world, ensuring we deliver the electric economy that leaves the Wales we want for generations to come.

It is through projects such as this that BCBC will meet its net-zero targets.



Clean, green, locally produced energy from...

1. Mynydd y Gaer Wind

2. Ty'n y Waun Solar

Will be used to power our proposed...

3. Ti'r Isha Employment Zone

4. J36 Transport Hub

Surplus power will enable...

Low-cost, sustainable power available for local businesses & industries

Opportunity for BCBC to deliver a local energy network



CENIN

Key Deliverables



By delivering the Lowest Cost of Energy (LCOE), local residents will save **£40 million** per year when compared to gas.



£10 million per year of direct investment in the local economy.



Community support benefits totalling **£200k** per year for the lifetime of the project.



110,000 tonnes of carbon saved every year it's in operation.



Greatly increased energy security in uncertain times.



Creating the opportunity for BCBC to deliver a local energy network to power local schools, hospitals and council buildings.



Providing local industries with low-cost, sustainable power to greatly reduce their costs, keeping and creating jobs in the area.



Driving ecological enhancement throughout the 50-year project by investing over **£10 million**.

Mynydd y Gaer Wind

Overview

Mynydd y Gaer Wind Farm would sustainably supply the total power needs for 60,000 homes, producing local power that would help Bridgend reach its net-zero aspirations.

The wind farm is proposed on Mynydd y Gaer Common found to the north of Heol y Cyw and to the southeast of Blackmill and south of Glynogwr.

The project will enable greater access to the Common for recreation and wellbeing.

Current Project Status

Consultation and engagement with local communities, Community Councils, politicians and the general public has been ongoing since 2021.

'Drop-in' sessions have been held at Heol y Cyw Welfare Hall, Bryncethin Community Centre, Glynogwr Church, Bryncethin Memorial Hall & Blackmill Community Centre.

We are using what we learned from our engagement to finalise our design.

The full planning application will be submitted to PEDW in late 2024/early 2025.



CENIN

Ty'n y Waun Solar

Overview

Ty'n y Waun Solar is an innovative solar PV scheme that would sustainably supply the total power needs of 12,500 homes whilst bringing a wide range of benefits to Heol y Cyw and the surrounding area.

The solar PV farm would be situated between Heol y Cyw and Bryncethin.

The project would encompass 35MW of south, west and east facing solar PV on land previously used for opencast mining.

Current Project Status

We began engagement on this project in 2021 with politicians, Community Councils, BCBC Councillors, the Commoners Association and Board of Conservators.

We held two site open days, arranged two different brochure deliveries around the local area and held drop in sessions at Heol y Cyw Welfare Hall and Bryncethin Community Centre.

The full planning application for Ty'n y Waun Solar was submitted to PEDW in June 2023 and a decision is expected in early 2025.



CENIN

J36

Transport Hub

Overview

Located at Junction 36 of the M4 Motorway, the Transport Hub will be a travel centre for future transport needs, shaped by the local community to best deliver for the people of Bridgend.

It offers the opportunity to create a new era of mobility by delivering real choice through multi-modal personal transportation options in one location.

There will be sustainable multi-fuel charging facilities on site for all vehicle types (including EV ultra-rapid charging). Giving a choice of how someone travels will bring with it benefits in the flexibility, efficiency, safety and important savings in the cost of travel.

Transport is one of the largest contributors to CO2 emissions, and without innovative solutions to this problem, we won't reach our net-zero targets. By reducing individual travel journeys we hope to reduce the number of drivers and vehicles on the road thus ultimately reducing the vast contribution transport makes towards global warming.

Current Project Status

2024 will see a wide range of consultation and engagement with the local community, ensuring we clearly communicate our vision for the future of transport in the area, as well as our desire to protect local residents' amenities by keeping the public open space and enabling it to thrive. We plan on consulting until mid 2025, with the local community, with a particular emphasis on youth, the **future users** of the Transport Hub.



Indicative Artist's Impression

CENIN



Indicative Artist's Impression

Ti'r Isha Employment Area

Overview

Our Ti'r Isha Employment Area aims to attract advanced manufacturing that requires a high volume of energy at an affordable price.

Situated adjacent to the M4, supplied by a significant source of green energy, this will create high-value sustainable employment for local residents.

This inward investment will aid local economic growth at a time when investment into Bridgend and **job creation** is vitally needed.

Current Project Status

Plans for the Ti'r Isha Employment Zone are at a relatively early stage and we look forward to releasing more information as we consult with local residents and businesses about our plans throughout 2024.

Thank you

Find out more about the project at
bridgendenergyhub.co.uk

Or for more information about CENIN visit
cenin.co.uk
[@CENINGreenPower](https://twitter.com/CENINGreenPower)

Or contact me directly
martynp@cenin.co.uk

"Many individuals are doing what they can. But real success can only come if there is a change in our societies and in our economics and in our politics...what humans do over the next 50 years will determine the fate of all life on the planet."

Sir David Attenborough on Climate Change



BRIDGEND ENERGY HUB

Scan the QR code
from a mobile
device and
have your say on
renewable energy



CENIN 

bridgendenergyhub.co.uk

Dear Resident,

The Bridgend Energy Hub is a future generations project that will transform both how we generate and consume energy across the Borough.

In this update, you can read how our plans for the four key elements of the scheme are progressing, as well as find answers to a number of questions we have received about our proposals.

We are also delighted to be able to invite you to take part in our **online survey** about the future of renewable energy in Wales, which will inform our plans going forward. You can scan the QR code on the front of this brochure or visit bridgendenergyhub.co.uk.

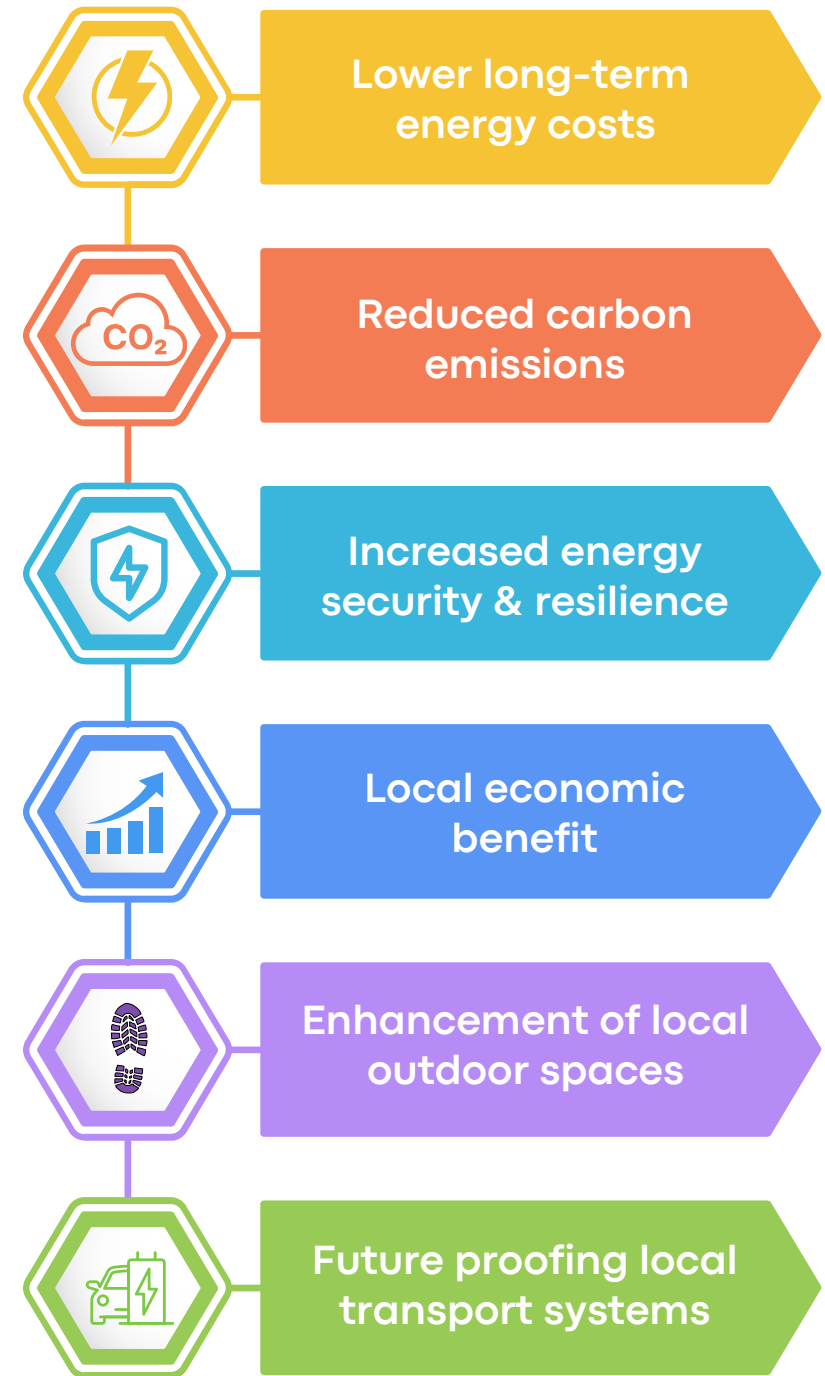
As ever, feedback and questions about our plans are greatly received, and in addition to the contact details you'll find in this brochure, we would also like to extend a welcome to visit our Parc Stormy site to see the work we're doing to help power a greener future.

As a Bridgend-based, family-owned company, we're incredibly passionate about the benefits this project can bring to the local area and hope you'll support our ambition to leave the Wales we want for future generations.

Best Wishes



Martyn Popham
Director, CENIN



Ty'n y Waun Solar

In October we were delighted to receive permission from Welsh Government Ministers to develop Ty'n y Waun Solar, an innovative solar scheme that will provide clean, green power for the Bridgend Energy Hub.

Situated on the outskirts of Heol y Cyw, once built, Ty'n y Waun Solar will sustainably supply the total power needs of approximately 12,500 homes whilst continuing to deliver a range of benefits for the local community.

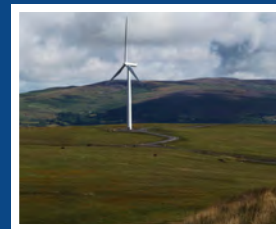
We look forward to continuing to work closely with local residents as the project enters the build phase.



Mynydd y Gaer Wind

Mynydd y Gaer Wind would play a key role in helping Bridgend reach its net-zero targets.

Consultation and engagement with local communities, Community Councils, politicians and the general public has been ongoing since 2021, and we are now in the process of using what we have learned from our engagement to finalise our design before submitting our plans in early 2025.



We will shortly be entering a period of statutory pre-application consultation (PAC) for the scheme, in which we welcome further input from local residents. Once confirmed, notification of the PAC start date will be communicated to residents.

Junction 36 Travel Hub

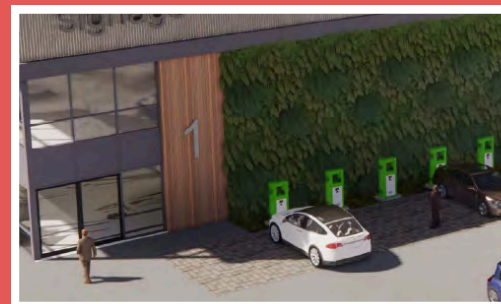
The Junction 36 Travel Hub will be a travel centre for future transport needs, shaped by the local community to best deliver for the future of Bridgend.



We have already begun to engage with the local community, ensuring we clearly communicate our vision for the future of transport in the area, as well as our desire to protect an amenity for local residents by enhancing a public open space and helping it to thrive. We plan on continuing this consultation until mid-2026.

Ti'r Isha Employment Area

Situated adjacent to the M4 motorway and powered by clean, green energy, **Ti'r Isha Employment Area** will create high-value sustainable employment for local residents. This inward investment will aid local economic growth at a time when investment into Bridgend and job creation is vitally needed.



Plans for the Ti'r Isha Employment Area have already been submitted to deregister the small section of Common Land, with an outline planning application to be submitted in early 2025.

Project FAQs

What is local ownership?

In 2020, Welsh Government set an expectation for all new energy projects in Wales to have at least an element of local ownership. We always look to include local landowners as much as possible in our projects to share these benefits, helping people develop sustainable income streams and providing creative solutions to community needs.

Why have you chosen Mynydd y Gaer?

Future Wales 2040: The National Plan identifies Mynydd y Gaer Common as a Pre Assessed Area for Wind Energy. In such areas, Welsh Government has already modelled the likely impact on the landscape and has found them to be capable of accommodating development in an acceptable way. There is a presumption in favour of large-scale wind energy development (including repowering) in these areas.

How will the local area benefit from the energy produced?

Bridgend Energy Hub encompasses community energy at its core, creating local green energy and offering its low-cost power to any local business that can utilise this power, including Bridgend County Borough Council. Where possible, we will utilise local suppliers and contractors when developing these projects.

In addition to the energy produced, the scheme will also bring a number of other benefits to the local area including, but not limited to, job creation, inward investment and support for local groups and organisations through a community fund.

How will you protect and enhance local public space?

Through major investment in the ecological enhancement and maintenance of Coity Wallia Common over the project's 50 year lifespan, we aim to not only maintain but enhance and increase public access to the Common. We are working closely with the local Commoners Association to formulate these plans.

What is energy security?

Both the availability of, and the price we pay for our energy is currently subject to a wide-range of global factors that are beyond our control. By producing energy locally in order to meet Welsh Government's 2030 aim for electricity generation, we increase our energy security, reducing our reliance on imported coal and gas, and the volatility this brings.

Get involved!

There are plenty of ways you can help shape our plans for the Bridgend Energy Hub.

Any questions or comments can be emailed to nextgeneration@bridgendenergyhub.co.uk or you can speak to a member of the team on **01656 760 550**.

If you're interested in visiting us at Parc Stormy please contact visitus@cenin.co.uk

Mynydd y Gaer Wind

Pre Application Consultation (PAC) Update

PAC Consultation Sessions

Join us at one of the below sessions where you can ask questions about our plans, as well as view copies of the information contained on our project website.

All sessions will run from 5 - 7pm

Thursday 6th February
St Tyfodwg's Church, Glynogwr

Wednesday 12th February
Bryncethin Memorial Hall, Bryncethin

Wednesday 19th February
Blackmill Community Centre, Blackmill

Thursday 27th February
Heol y Cyw Social Club, Heol y Cyw

Thursday 5th March
Pencoed Welfare Hall, Pencoed

Scan the QR code from a mobile device and
have your say on renewable energy



mynyddygaerwind.co.uk

Dear Resident,

You will hopefully have already received communication from us about our plans to develop a wind scheme on Mynydd y Gaer, part of our wider plans for the Bridgend Energy Hub.

We are now getting in touch to let you know that the Pre-Application Consultation (PAC) for this project will run from the **28th January until the 11th March 2025**.

During this time, the various sections of our draft planning application will be made available on our project website, and you will also be able to access a number of informative digital slides which will outline our proposals.

The Pre-Application Consultation is an opportunity for you to find out more about our plans and for us to better understand your views and opinions on the scheme before we submit our full planning application later in 2025.

We are working closely with the Coity Wallia Commoners Association and the Dunraven Estate to formulate a unique ecological management plan for the site, details of which you'll find opposite.

We hope this plan will both maintain and enhance the area for the 50 year lifetime of the project and beyond.

Please visit mynyddygaerwind.co.uk to find out more about the project and send any questions, feedback or comments about our proposals to jessk@cenin.co.uk & damian.barry@rps.tetrattech.com

Martyn Popham
Director & Project Lead

CENIN

