

We are proud to share our outline plans to develop the Ti'r Isha Employment Area, a key part of the Bridgend Energy Hub that aims to attract advanced technologies that require a high volume of energy, at an affordable price.

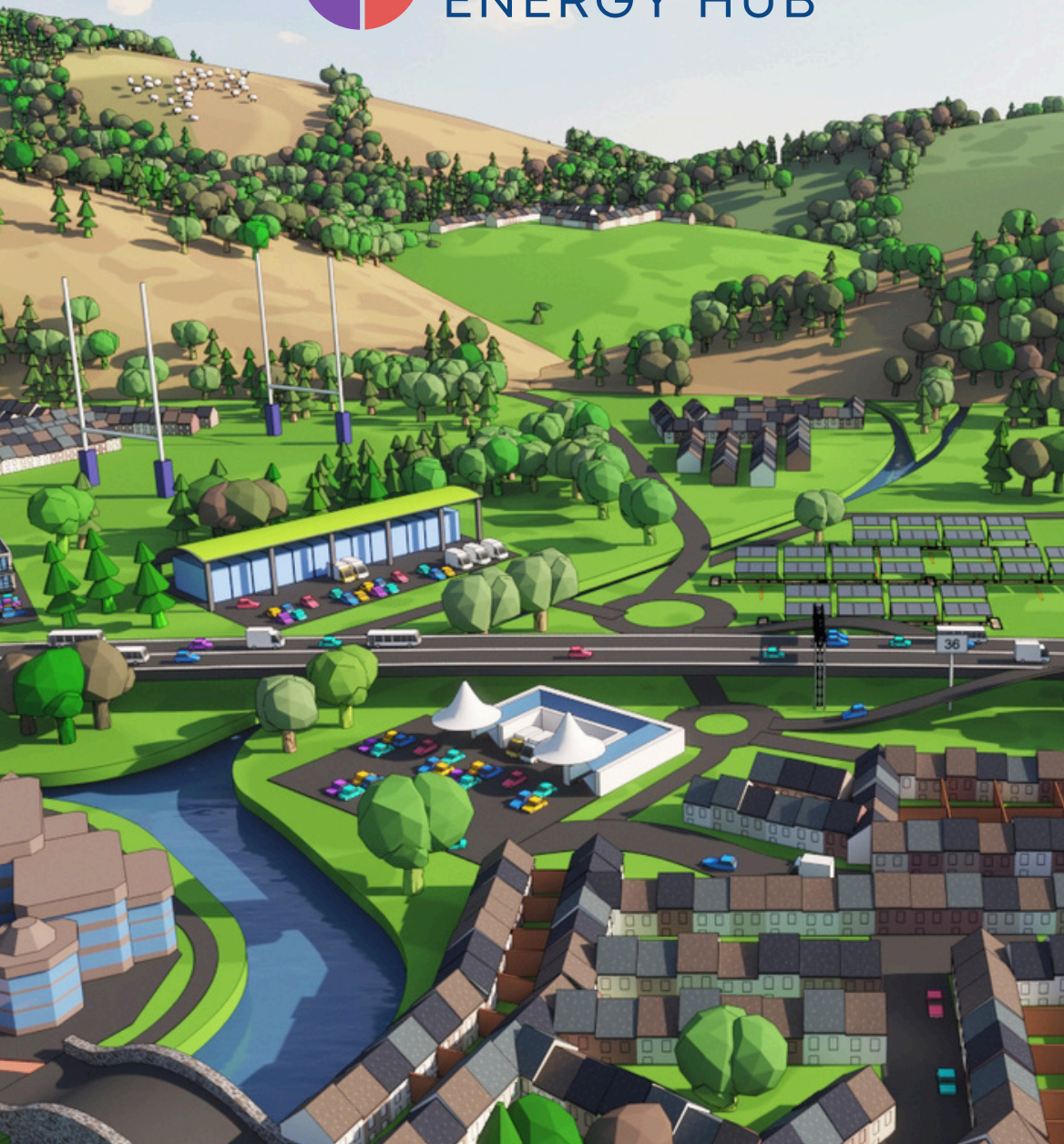
This outline planning application is concerned with the general principles of developing the site.

The proposed site is situated adjacent to the M4 and is allocated for employment use in Bridgend's Local Development Plan.

Supplied by a significant source of green energy, the area would create high-value sustainable employment for local residents. This inward investment will aid local economic growth at a time when investment into Bridgend and job creation is vitally needed.

We invite you to find out more about our plans in the following slides and email any feedback to jessk@cenin.co.uk and Damian.Barry@rps.tetrattech.com

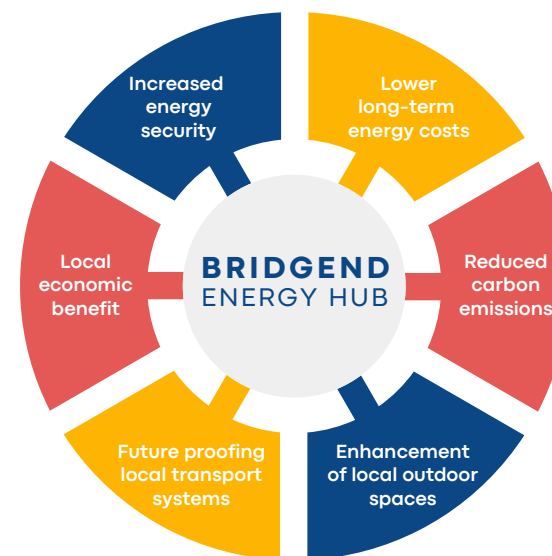




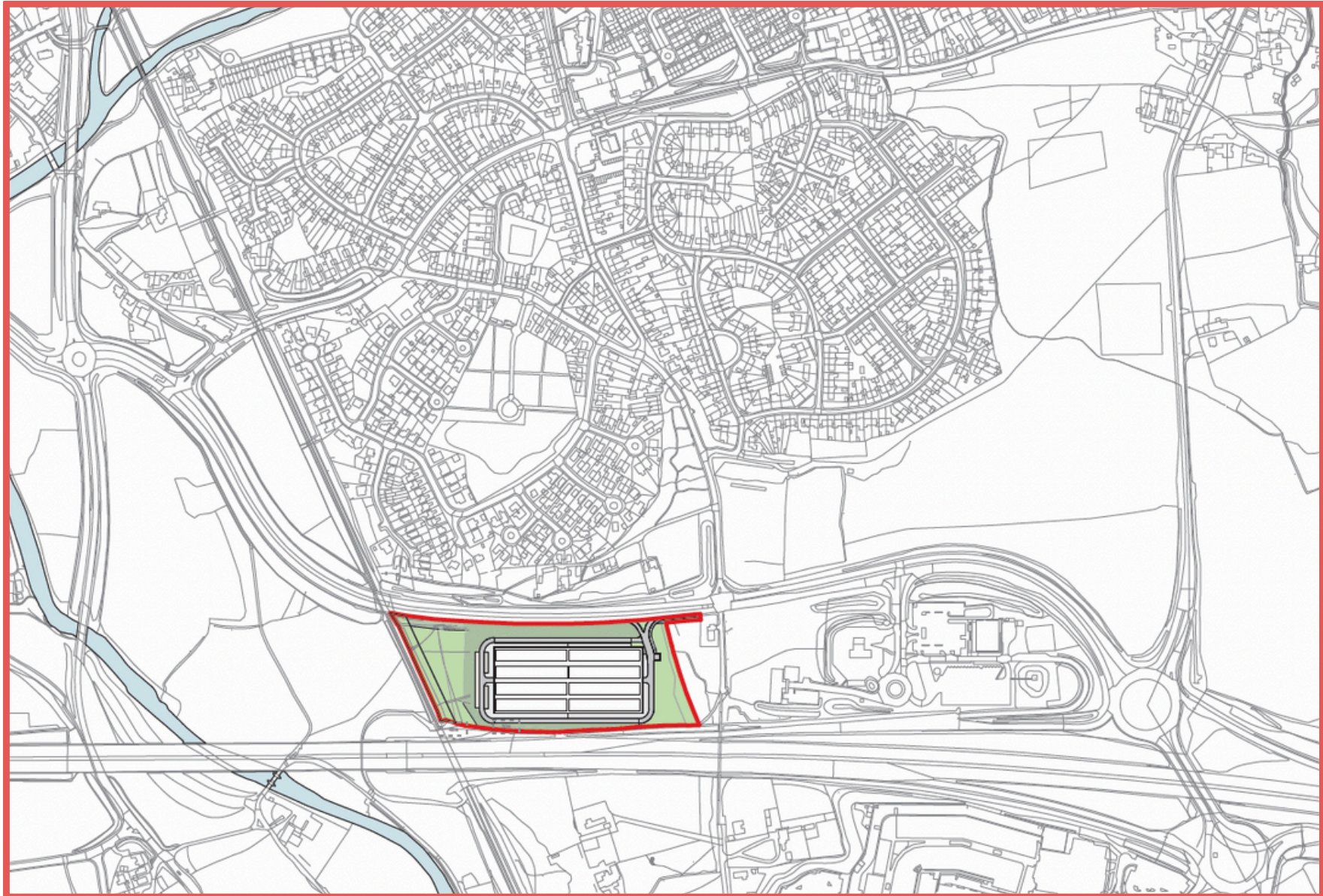
Ti'r Isha Employment Zone is a key element of our proposed Bridgend Energy Hub, a future generations project that will transform both how we generate and consume energy across the Borough.

In October 2024, we were delighted to receive permission from Welsh Government Ministers to develop Ty'n y Waun Solar which when combined with Mynydd y Gaer Wind, would generate enough clean, green power for 72,500 homes.

This clean, green power would enable the development of a Travel Hub at Junction 36 of the M4 motorway in addition to the Employment Zone, bringing with it a range of benefits to the local area. Find out more at: bridgendenergyhub.co.uk



The site location plan below shows how the concept design sits within the surrounding context. It maximises the space on the site, to attract green industries / businesses to the Bridgend area. A new junction has been provided from the A4063 for vehicular access to the site. This is located on the flattest part of the site and 100m away from the existing signalling junction adjacent to the pumping station.



The proposed building has a modern industrial aesthetic. It is a single mass with large volume spaces for flexible employment use. The precedents on this page show examples of form, scale and materiality, which can be further defined at the next stage.

Please note all these images are indicative of what could be achieved.



About Us

We are a Bridgend-based, family-owned company that believes in creating a cleaner, more sustainable future for generations to come.

Through our innovative approach to building integrated renewable energy systems, we unlock potential to provide more value to local communities.

In 2021, our work in sustainable development was recognised with the Queen's Award for Enterprise.

We're incredibly passionate about the benefits this project can bring to the local area and hope you'll support our ambition to leave the Wales we want for future generations.

Find out more about us at cenin.co.uk

Our Team



Martyn Popham
Director & Project Lead



Neil Tapper
Director - Engineering



Katherine Day
Financial Controller



Jess King
Projects Manager



Planning Partner
rpsgroup.com



Reuben Hamon
Project Designer



Paul Kelliher
Legal Contracts & Administration Manager



Clare Brown
Agriculture and Learning Coordinator



Land Agents
farmtrack.co.uk



Communications Partner
avenue.wales

